

## May 2015 – SeaDataNet catalogues follow-up

---

All documents used to write this report are available on the extranet of the project under [SeaDataNet II> Follow up](#).

In May 2015, global increases on catalogue **CSR** (+96), **EDMO** (+ 98), **EDMERP** (+8), **EDMED** (+6) and no activities on **EDIOS-PRG** .

A global decrease of **CDI** records is noted (-10 766).

Details of last month upgrades per partners are the following:

CDI partner	Country	Last increase
<b>HCMR</b>	Greece	<b>69</b>
<b>ICES</b>	Denmark	<b>111</b>
<b>IFREMER</b>	France	<b>-1</b>
<b>IHPT</b>	Portugal	<b>444</b>
<b>IO-BAS</b>	Bulgaria	<b>102</b>
<b>LIAE</b>	Latvia	<b>126</b>
<b>MSI</b>	Estonia	<b>27</b>
<b>NERC-BODC</b>	United Kingdom	<b>3 565</b>
<b>NIB</b>	Slovenia	<b>84</b>
<b>NIOZ</b>	Netherlands	<b>490</b>
<b>UOM</b>	Malta	<b>4</b>
	<b>TOTAL</b>	<b>5 021</b>

- 11 SeaDataNet partners have input or deleted data in the CDI catalogue, for a total increase of + 5021 records (\*).

- For others partners, not in the SeaDataNet consortium, 6 have worked on data for a total of + 3 370 records, but Southern Scientific Research Institute of Marine Fisheries and Oceanography (YuGNiro) has been replaced by another organization after Russia has taken over Crimea, and its 19 157 entries in the CDI metadata catalogue has been deactivated . For this reason the total result is a decrease of CDI records (-10 766).

The CSR automatic harvesting is done once a week in 4 data centres: IEO, IFREMER, HCMR and OGS.

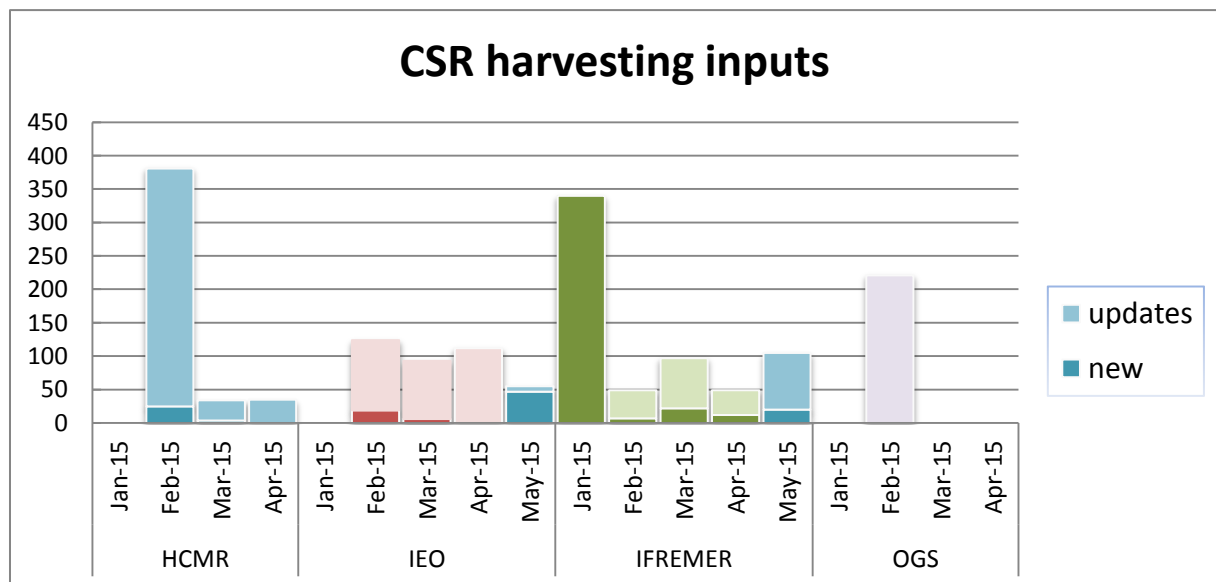
For May 2015, the result of this harvesting is 67 new records of CSR, and 93 updated records.

Details of harvesting per centre are the following:

Centre	Date	New	Updates
IFREMER	05/05/2015	4	28
IEO	05/05/2015	13	
IFREMER	12/05/2015	8	8
IFREMER	19/05/2015	4	29
IEO	19/05/2015	2	6
IFREMER	26/05/2015	4	20
IEO	26/05/2015	32	2
<b>Total</b>		<b>67</b>	<b>93</b>

OGS and HCMR had no CSR creations or updates during this month.

The graph below shows the CSR harvesting inputs since beginning of 2015 :



Since the beginning of the follow-up reports (October 2012), the global increase in CDI, per partner, is the following: Note that for SMHI, TSU-DNA and SIO-RAS the negative or low global increase is due to the change in their time series management (SMHI), the duplicates detection (TSU-DNA) or the change of data owner and the remove of incorrect records (SIO-RAS. The new owner is SOI, not in the SeaDataNet consortium).

CDI partner	Name of partner	Country	Nb 05/05/2015	Global increase
<b>SIO-RAS</b>	P.P.Shirshov Institute of Oceanology-RAS	Russian Federation	9 901	<b>-28 922</b>
<b>SMHI</b>	Swedish Meteorological and Hydrological Institute	Sweden	94 286	<b>-15 241</b>
<b>UOM</b>	International Ocean Institute - Malta Operational Centre (University Of Malta) / Physical Oceanography Unit	Malta	632	<b>4</b>
<b>TSU-DNA</b>	Iv.Javakishvili Tbilisi State University, Centre of Relations with UNESCO Oceanological Research Centre and GeoDNA	Georgia	908	<b>13</b>
<b>IOPAN</b>	IOPAN	Poland	18	<b>18</b>
<b>IMBK</b>	Institute of Marine Biology (IMBK)	Montenegro	51	<b>29</b>
<b>IOF</b>	Institute of Oceanography and Fisheries	Croatia	1 743	<b>167</b>
<b>RSHU</b>	RSHU	Russian Federation	206	<b>206</b>
<b>IOLR</b>	Israel Oceanographic and Limnological Research (IOLR)	Israel	5 399	<b>326</b>
<b>VLIZ</b>	Flanders Marine Institute	Belgium	1 967	<b>348</b>
<b>NIMRD</b>	National Institute for Marine Research and Development Grigore Antipa	Romania	4 685	<b>431</b>
<b>CNR</b>	CNR	Italy	484	<b>484</b>
<b>INRH</b>	Institut National de Recherche Halieutique	Morocco	536	<b>536</b>
<b>EPA</b>	Environmental Protection Agency (EPA)	Lithuania	962	<b>549</b>
<b>MHI</b>	Marine Hydrophysical Institute	Ukraine	96 027	<b>679</b>
<b>ENEA</b>	ENEA Centro Ricerche Ambiente Marino - La Spezia	Italy	8 805	<b>731</b>
<b>MUMM</b>	Management Unit of the North Sea and Scheldt estuary Mathematical Models	Belgium	12 329	<b>796</b>
<b>IO-BAS</b>	Bulgarian National Oceanographic Data Centre(BGODC)	Bulgaria	3 206	<b>898</b>
<b>INSTM</b>	Institut National des Sciences et Technologies de la Mer	Tunisia	969	<b>969</b>
<b>TUBITAK-SHODB</b>	Turkiye Bilimsel ve Teknolojik Arastirma Kurumu	Turkey	1 180	<b>1 180</b>
<b>NIOZ</b>	NIOZ Royal Netherlands Institute for Sea Research	Netherlands	6 006	<b>1 377</b>
<b>OC-UCY</b>	Cyprus Oceanography Center	Cyprus	3 546	<b>1 991</b>
<b>MRI</b>	Marine Research Institute (MRI)	Iceland	5 914	<b>2 090</b>
<b>LIAE</b>	Latvian Institute of Aquatic Ecology	Latvia	2 661	<b>2 354</b>
<b>IBSS</b>	Institute of Biology of the Southern Seas	Ukraine	4 897	<b>2 791</b>
<b>MI</b>	Marine Institute	Ireland	7 680	<b>2 979</b>
<b>IHPT</b>	IHPT, Hydrographic institute	Portugal	4 112	<b>3 207</b>
<b>NIB</b>	National Institute of Biology - NIBMarine Biology Station	Slovenia	7 375	<b>3 255</b>

<b>HCMR</b>	Hellenic Centre for Marine Research	Greece	15 652	<b>3 628</b>
<b>IEO</b>	IEO/Spanish Oceanographic Institute	Spain	35 781	<b>4 366</b>
<b>UniHb</b>	Universitaet Bremen	Germany	6 844	<b>6 844</b>
<b>IMGW</b>	Instytut Meteorologii i Gosodarki Wodnej	Poland	8 752	<b>8 752</b>
<b>OGS</b>	OGS (Istituto Nazionale di Oceanografia e di Geofisica Sperimentale)	Italy	99 525	<b>9 927</b>
<b>FMI</b>	Finnish Meteorological Institute	Finland	13 500	<b>11 289</b>
<b>MSI</b>	Marine Systems Institute at Tallinn University of Technology	Estonia	26 072	<b>13 075</b>
<b>ICES</b>	ICES	Denmark	20 013	<b>20 013</b>
<b>BSH-DOD</b>	German Oceanographic Datacentre (NODC)	Germany	38 389	<b>21 111</b>
<b>METU-IMS</b>	Institute of Marine Sciences, Middle East Technical University	Turkey	25 795	<b>22 713</b>
<b>IFREMER</b>	IFREMER / IDM/SISMER	France	248 357	<b>42 158</b>
<b>NERC-BODC</b>	British Oceanographic Data Centre	United Kingdom	94 495	<b>46 438</b>
<b>NERI</b>	Aarhus University	Denmark	223 349	<b>59 195</b>
<b>RIHMI-WDC</b>	All-Russia Research Institute of Hydrometeorological Information - World Data Centre (RIHMI-WDC) (NODC)	Russian Federation	119 329	<b>62 204</b>
<b>IMR</b>	Institute of Marine Research - Norwegian Marine Data Centre (NMD)	Norway	107 829	<b>93 036</b>
<b>SHOM</b>	SHOM (Service Hydrographique et Océanographique de la Marine)	France	164 968	<b>158 545</b>
			<b>TOTAL</b>	<b>1 535 135</b>
				<b>567 539</b>

Catalogue	Sept-12	Oct-12	Nov-12	Dec-12	Jan-13	Feb-13	Mar-13	Apr-13	May-13	Aug-13	Sep-13	Oct-13	Nov-13	Dec-13
EDMO	2 261	2 283	2 296	2 304	2 330	2 351	2 359	2 362	2 370	2 384	2 404	2 404	2 423	2 431
EDMED	3 834	3 834	3 834	3 834	3 834	3 834	3 882	3 885	3 885	3 889	3 901	3 901	3 925	3 944
EDMERP	2 617	2 637	2 667	2 674	2 683	2 684	2 685	2 686	2 690	2 698	2 710	2 710	2 772	2 772
EDIOS-PRG	350	350	350	350	353	353	353	353	354	356	358	359	359	359
CSR	41 330	41 481	41 832	42 256	43 423	43 539	43 782	44 153	43 479	43 687	43 713	43 765	44 094	44 236
CDI	1 088 322	1 097 399	1 241 010	1 267 669	1 274 982	1 291 491	1 302 629	1 311 827	1 317 191	1 350 455	1 356 245	1 360 236	1 386 446	1 496 950

Figure 1 - Global counts on all catalogues in 2012/2013

Catalogue	Jan-14	Feb-14	Mar-14	Apr-14	May-14	Jun-14	Jul-14	Aug-14	Sep-14	Oct-14	Nov-14	Dec-14	Jan-15	Feb-15	Mar-15	Apr-15	May-15
EDMO	2 451	2 467	2 651	2 685	2 688	2 692	2 693	2 701	2 875	3 103	3 199	3 212	3 210	3 223	3 275	3 324	3 422
EDMED	3 944	3 945	3 945	3 947	3 948	3 955	3 957	3 960	3 961	3 962	3 963	3 965	3 980	3 982	3 984	3 984	3 990
EDMERP	2 787	2 808	2 830	2 832	2 834	2 837	2 841	2 844	2 847	2 849	2 850	2 857	2 858	2 866	2 878	2 878	2 886
EDIOS-PRG	359	360	360	360	360	360	360	360	360	360	360	360	360	360	361	361	361
CSR	44 230	44 294	44 447	44 518	44 518	44 657	44 696	45 012	45 072	45 109	45 156	45 163	45 483	45 534	45 744	45 810	45 906
CDI	1 498 793	1 537 556	1 558 428	1 566 528	1 569 847	1 575 035	1 604 916	1 612 514	1 621 749	1 626 904	1 631 984	1 662 548	1 714 285	1 721 708	1 721 604	1 720 724	1 709 958

Figure 2 - Global counts on all catalogues in 2014/2015

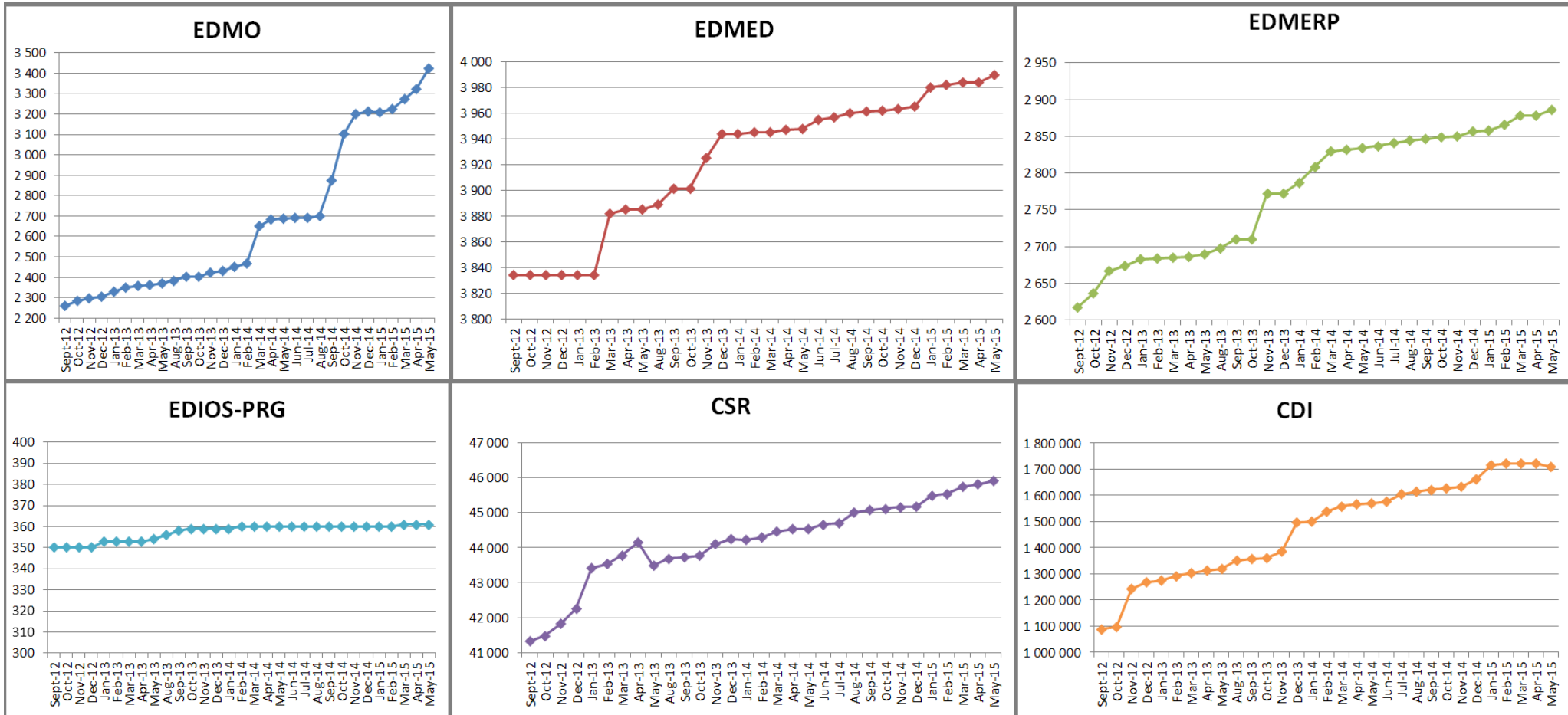
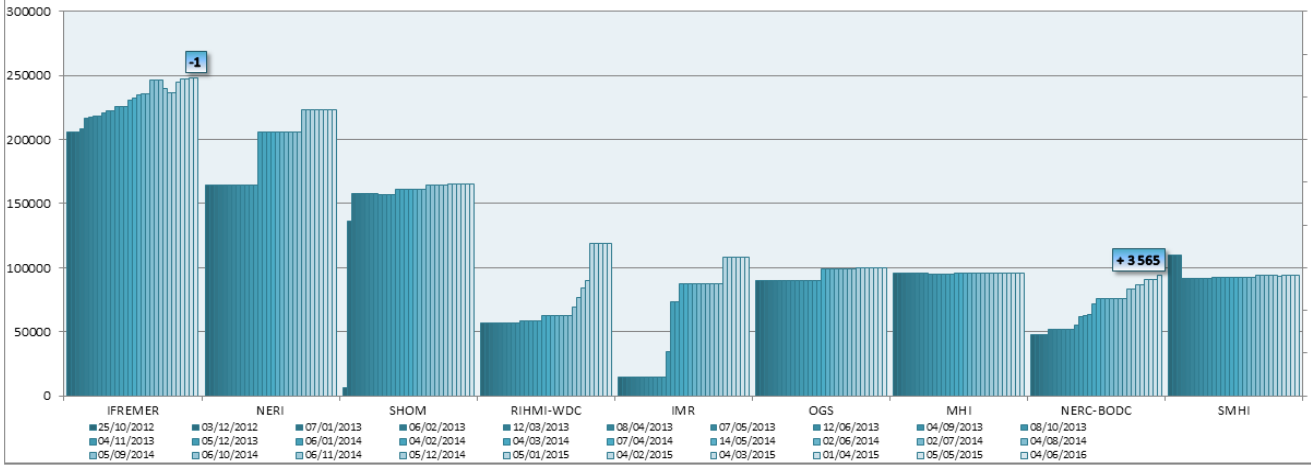
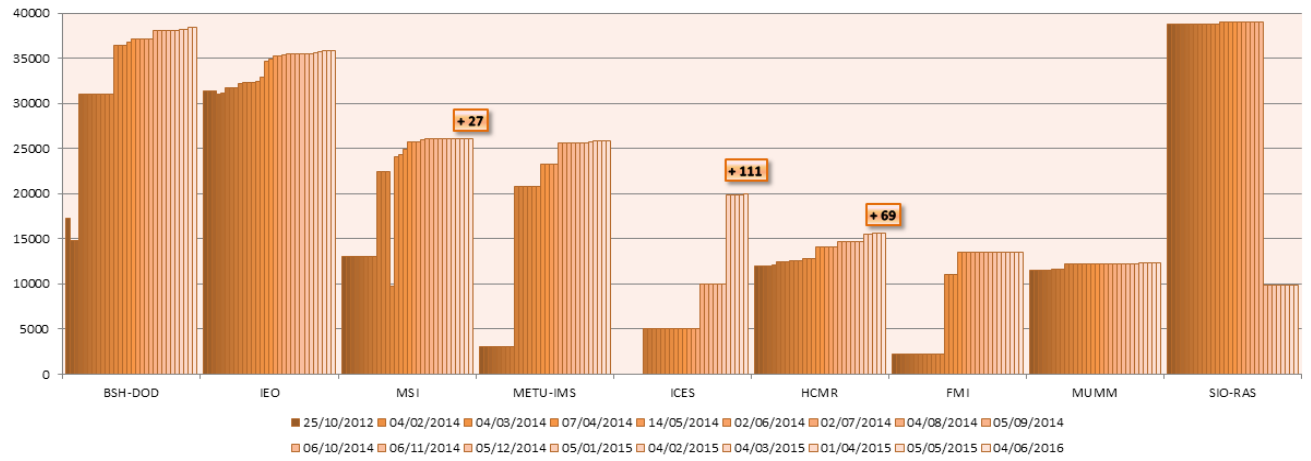


Figure 3 - Nb of EDMO, EDMED, EDMERP, EDIOS, CSR and CDI per month

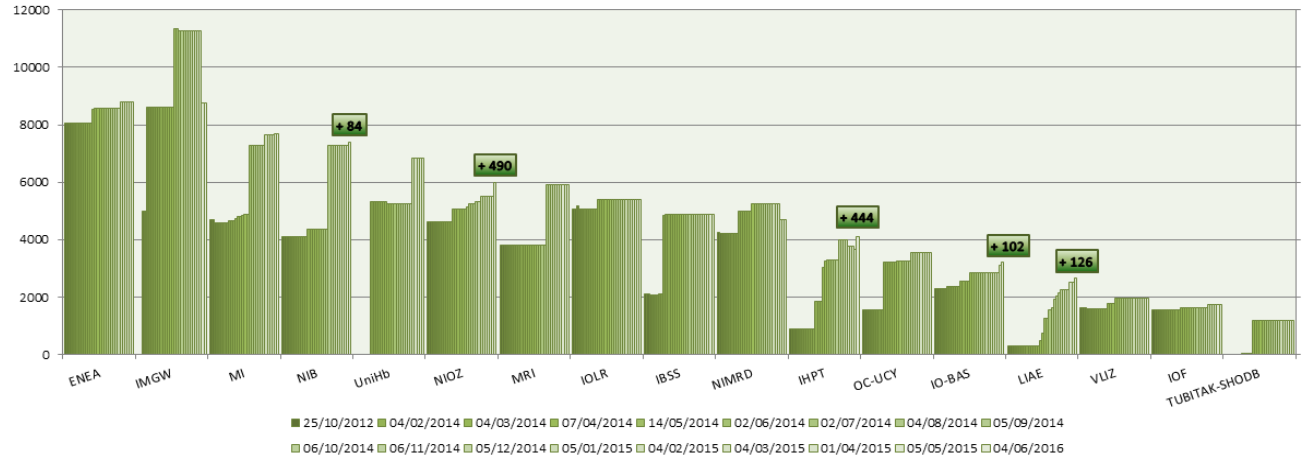
### Partners with more than 50 000 CDIs



### Partners with 10 000 < CDIs < 50 000



### Partners with 1 000 < CDI entries < 10 000



### Partners with less than 1 000 CDI entries

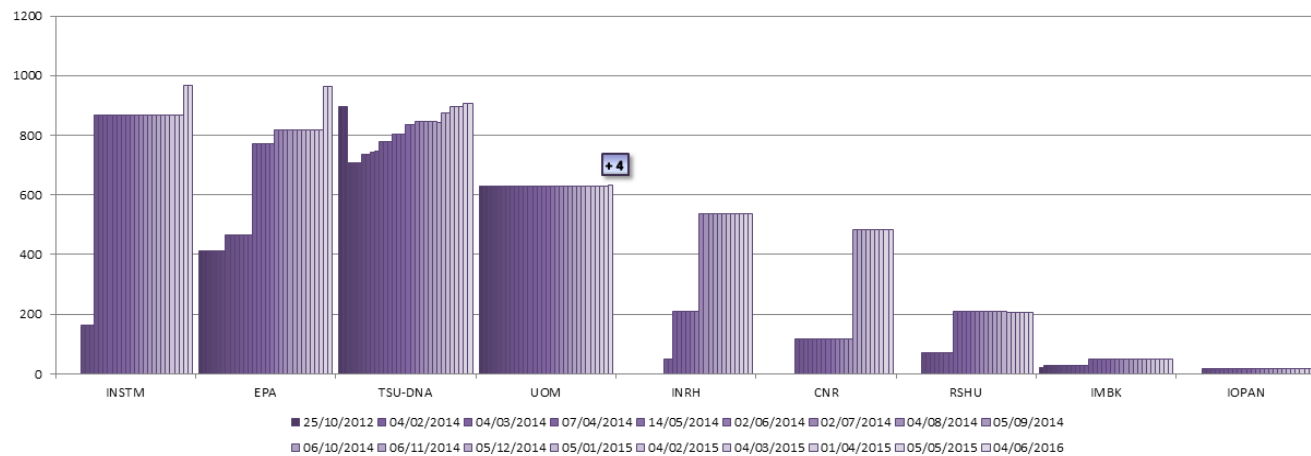


Figure 4 - Nb of CDIs per partner, data centres with new data input in April 2015