

December 2014 – SeaDataNet catalogues follow-up

Here are the graphs for monitoring the SeaDataNet catalogues content (all documents are available on the extranet of the project under [SeaDataNet II> Follow up](#)).

In December 2014, global increases on catalogue CDI (+30 564) and not much on EDMO (+13), EDMED (+2), EDMERP (+7), CSR (+7).

No activities on EDIOS-PRG.

Details of last month upgrades per partners are the following:

CDI partner	Country	Last increase
BSH-DOD	Germany	-1
ENEA	Italy	245
ICES	Denmark	-1
IMR	Norway	20 000
IO-BAS	Bulgaria	-5
IOF	Croatia	118
MI	Ireland	375
MSI	Estonia	-32
NERC-BODC	United Kingdom	3 117
NERI	Denmark	-187
OGS	Italy	5
RIHMI-WDC	Russian Federation	6 421
RSHU	Russian Federation	-3
SHOM	France	514
SMHI	Sweden	-20
TUBITAK-SHODB	Turkey	-3
Total		30 543

16 SeaDataNet partners have input or deleted data in the CDI catalogue, for a total increase of 30 543 records, and 2 partners, not in the SeaDataNet consortium, have a increase of 21 CDIs.

Since the beginning of the follow-up reports (October 2012), the global increase in CDI, per partner, is the following: Note that for SMHI, TSU-DNA and SIO-RAS the negative global decrease is due to the change in their time series management (SMHI), the duplicates detection (TSU-DNA) or the change of data owner. Only one partner is inactive concerning the input of new data in the CDI catalogue.

CDI partner	Name of partner	Country	Nb 05/01/2015	Global increase
SIO-RAS	P.P.Shirshov Institute of Oceanology-RAS	Russian Federation	9 901	-28 922
SMHI	Swedish Meteorological and Hydrological Institute	Sweden	93 750	-15 777
TSU-DNA	Iv.Javakishvili Tbilisi State University, Centre of Relations with UNESCO Oceanological Research Centre and GeoDNA (UNESCO)	Georgia	876	-19
UOM	International Ocean Institute - Malta Operational Centre (University Of Malta) / Physical Oceanography Unit	Malta	628	0
IOPAN	IOPAN	Poland	18	18
IGEWE	IGEWE	Albania	21	21
IMBK	Institute of Marine Biology (IMBK)	Montenegro	51	29
IOF	Institute of Oceanography and Fisheries	Croatia	1 743	167
RSHU	RSHU	Russian Federation	206	206
IOLR	Israel Oceanographic and Limnological Research (IOLR)	Israel	5 399	326
VLIZ	Flanders Marine Institute	Belgium	1 967	348
EPA	Environmental Protection Agency (EPA)	Lithuania	818	405
CNR	CNR	Italy	484	484
ENEA	ENEA Centro Ricerche Ambiente Marino - La Spezia	Italy	8 805	731
INRH	Institut National de Recherche Halieutique	Morocco	536	536
IO-BAS	Bulgarian National Oceanographic Data Centre(BGODC)	Bulgaria	2 853	545
NIOZ	NIOZ Royal Netherlands Institute for Sea Research	Netherlands	5 507	878
MHI	Marine Hydrophysical Institute	Ukraine	96 035	687
MUMM	Management Unit of the North Sea and Scheldt estuary Mathematical Models	Belgium	12 245	712
INSTM	Institut National des Sciences et Technologies de la Mer	Tunisia	867	867
NIMRD	National Institute for Marine Research and Development Grigore Antipa	Romania	5 247	993
TUBITAK-SHODB	Turkiye Bilimsel ve Teknolojik Arastirma Kurumu	Turkey	1 182	1 182
LIAE	Latvian Institute of Aquatic Ecology	Latvia	2 254	1 947

OC-UCY	Cyprus Oceanography Center	Cyprus	3 546	1 991
MRI	Marine Research Institute (MRI)	Iceland	5 914	2 090
MI	Marine Institute	Ireland	7 662	2 961
HCMR	Hellenic Centre for Marine Research	Greece	14 687	2 663
IBSS	Institute of Biology of the Southern Seas	Ukraine	4 897	2 791
IHPT	IHPT, Hydrographic institute	Portugal	3 989	3 084
NIB	National Institute of Biology - NIBMarine Biology Station	Slovenia	7 291	3 171
IEO	IEO/Spanish Oceanographic Institute	Spain	35 534	4 119
UniHb	Universitaet Bremen	Germany	5 264	5 264
OGS	OGS (Istituto Nazionale di Oceanografia e di Geofisica Sperimentale)	Italy	99 499	9 901
ICES	ICES	Denmark	9 999	9 999
IMGW	Instytut Meteorologii i Gosodarki Wodnej	Poland	11 286	11 286
FMI	Finnish Meteorological Institute	Finland	13 500	11 289
MSI	Marine Systems Institute at Tallinn University of Technology	Estonia	26 032	13 035
RIHMI-WDC	All-Russia Research Institute of Hydrometeorological Information - World Data Centre (RIHMI-WDC) National Oceanographic Data Centre (NODC)	Russian Federation	90 350	33 225
BSH-DOD	German Oceanographic Datacentre (NODC)	Germany	38 111	20 833
METU-IMS	Institute of Marine Sciences, Middle East Technical University	Turkey	25 557	22 475
IFREMER	IFREMER / IDM/SISMER	France	236 490	30 291
NERC-BODC	British Oceanographic Data Centre	United Kingdom	86 856	38 799
NERI	Aarhus University	Denmark	223 349	59 195
IMR	Institute of Marine Research - Norwegian Marine Data Centre (NMD)	Norway	107 829	93 036
SHOM	SHOM (Service Hydrographique et Océanographique de la Marine)	France	164 974	158 551
TOTAL			1 474 009	506 413

Catalogue	Sept-12	Oct-12	Nov-12	Dec-12	Jan-13	Feb-13	Mar-13	Apr-13	May-13	Aug-13	Sep-13	Oct-13	Nov-13	Dec-13
EDMO	2 261	2 283	2 296	2 304	2 330	2 351	2 359	2 362	2 370	2 384	2 404	2 404	2 423	2 431
EDMED	3 834	3 834	3 834	3 834	3 834	3 834	3 882	3 885	3 885	3 889	3 901	3 901	3 925	3 944
EDMERP	2 617	2 637	2 667	2 674	2 683	2 684	2 685	2 686	2 690	2 698	2 710	2 710	2 772	2 772
EDIOS-PRG	350	350	350	350	353	353	353	353	354	356	358	359	359	359
CSR	41 330	41 481	41 832	42 256	43 423	43 539	43 782	44 153	43 479	43 687	43 713	43 765	44 094	44 236
CDI	1 088 322	1 097 399	1 241 010	1 267 669	1 274 982	1 291 491	1 302 629	1 311 827	1 317 191	1 350 455	1 356 245	1 360 236	1 386 446	1 496 950

Figure 1 - Global counts on all catalogues in 2012/2013

Jan-14	Feb-14	Mar-14	Apr-14	May-14	Jun-14	Jul-14	Aug-14	Sep-14	Oct-14	Nov-14	Dec-14
2 451	2 467	2 651	2 685	2 688	2 692	2 693	2 701	2 875	3 103	3 199	3 212
3 944	3 945	3 945	3 947	3 948	3 955	3 957	3 960	3 961	3 962	3 963	3 965
2 787	2 808	2 830	2 832	2 834	2 837	2 841	2 844	2 847	2 849	2 850	2 857
359	360	360	360	360	360	360	360	360	360	360	360
44 230	44 294	44 447	44 518	44 518	44 657	44 696	45 012	45 072	45 109	45 156	45 163
1 498 793	1 537 556	1 558 428	1 566 528	1 569 847	1 575 035	1 604 916	1 612 514	1 621 749	1 626 904	1 631 984	1 662 548

Figure 2 - Global counts on all catalogues in 2014

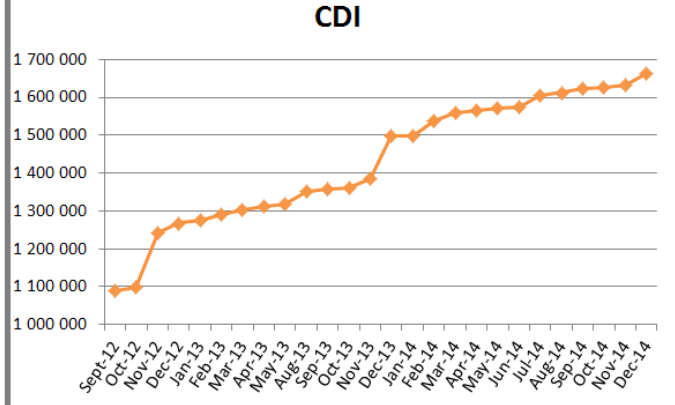
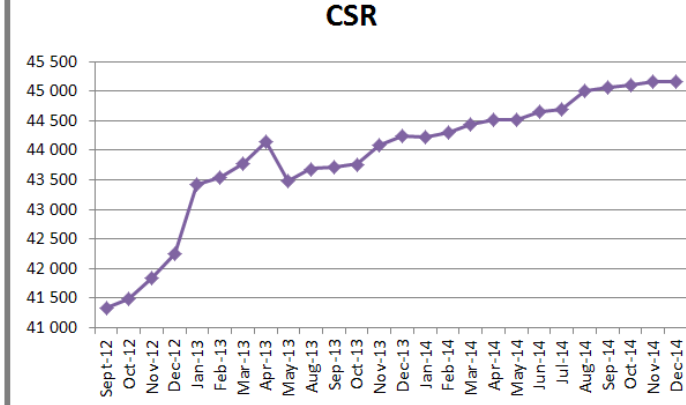
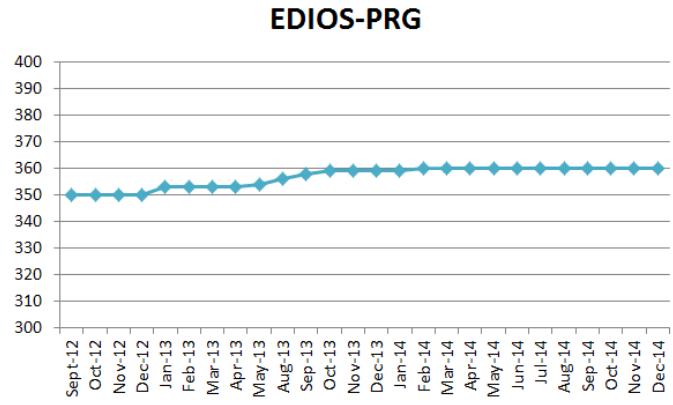
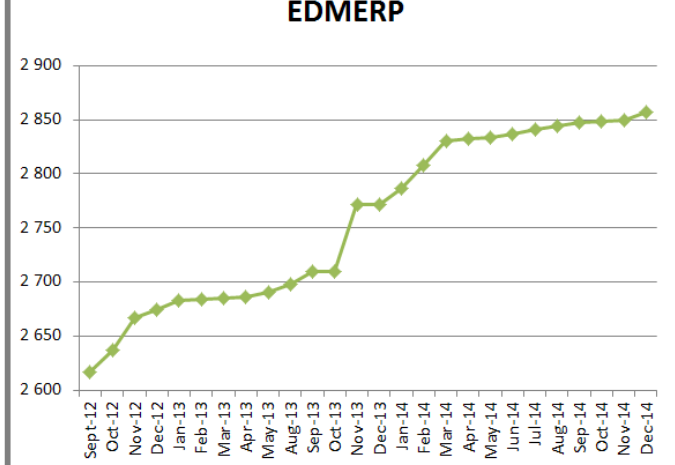
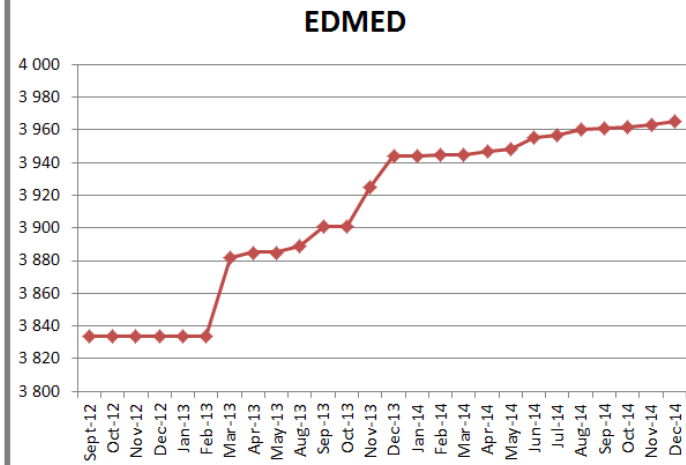
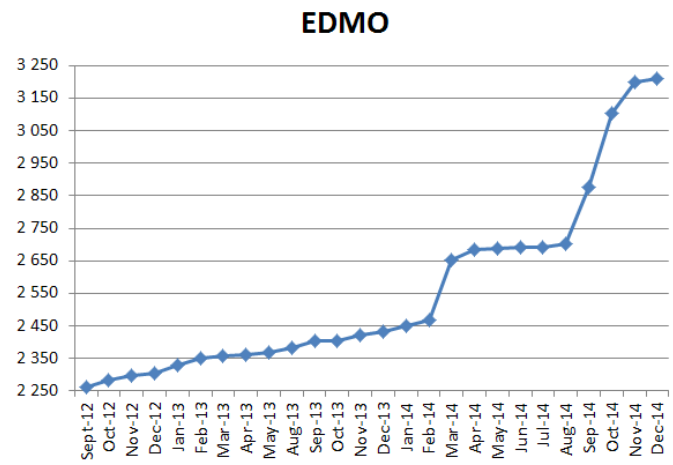
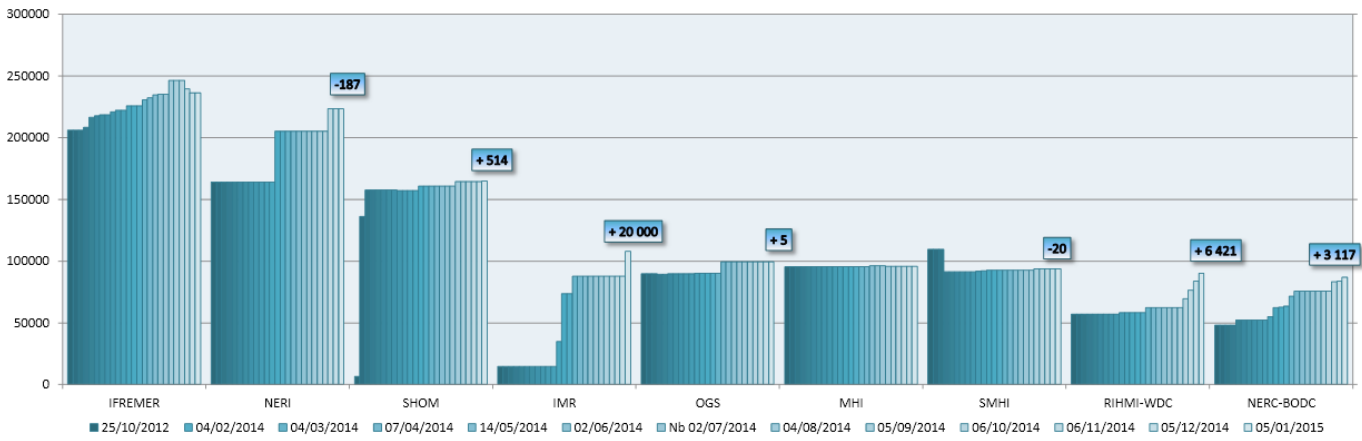
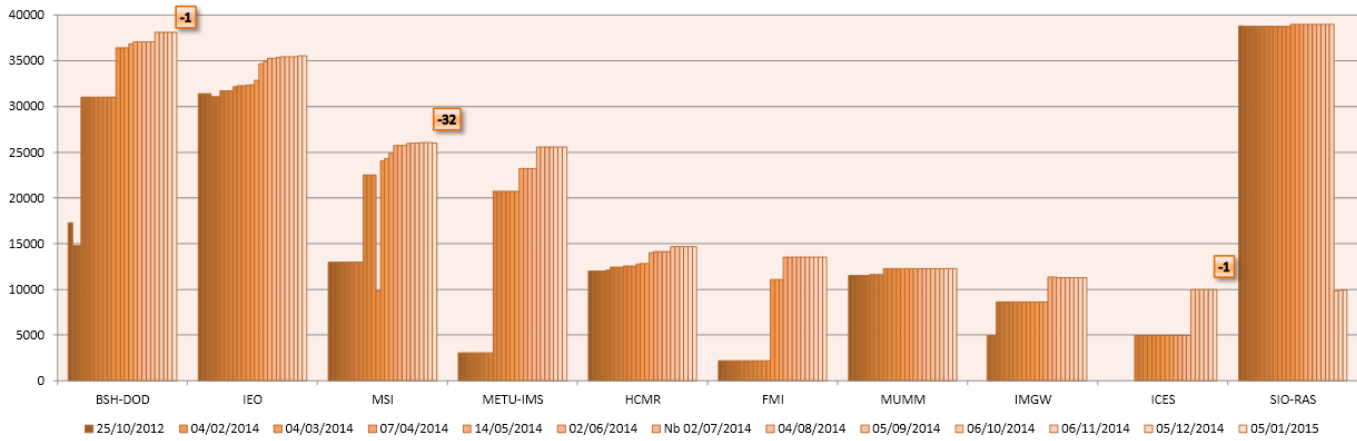


Figure 3 - Nb of EDMO, EDMED, EDMERP, EDIOS, CSR and CDI per month

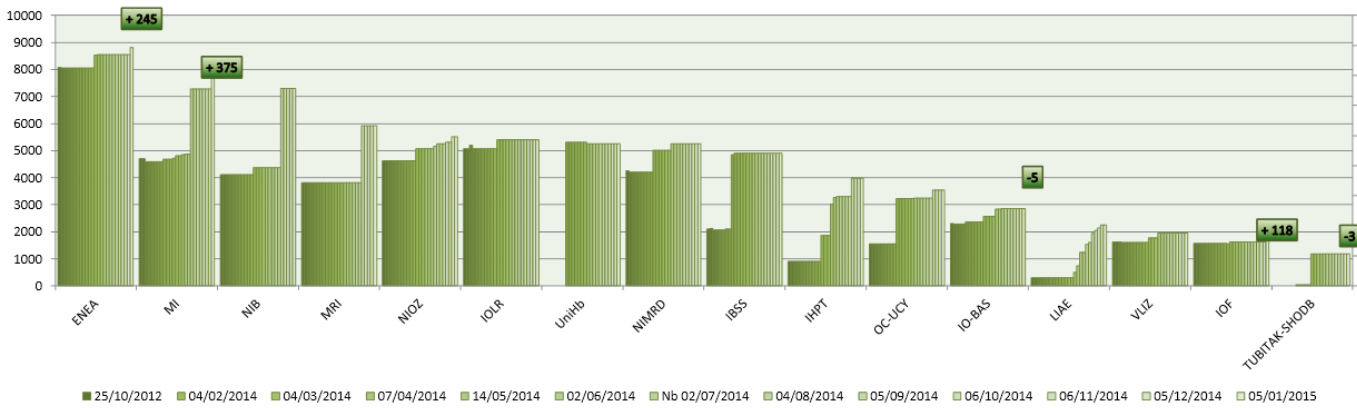
Partners with more than 50 000 CDIs



Partners with 10 000 < CDIs < 50 000



Partners with 1 000 < CDI entries < 10 000



Partners with less than 1 000 CDI entries

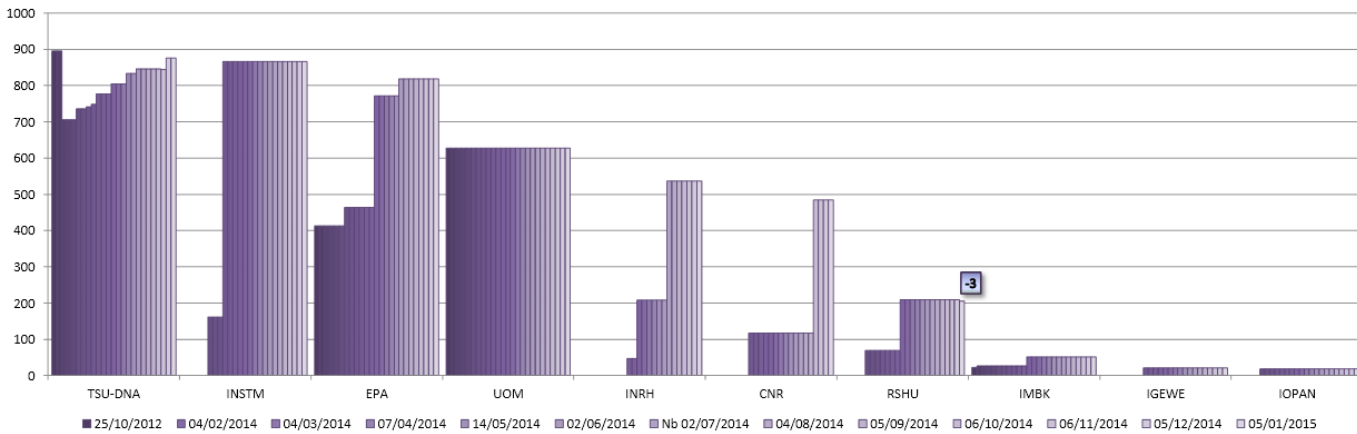


Figure 4 - Nb of CDIs per partner, data centres with new data input in December 2014