

## June 2014 – SeaDataNet catalogues follow-up

Here are the graphs for monitoring the SeaDataNet catalogues content (all documents are available on the extranet of the project under [SeaDataNet II> Follow up](#)).

In June 2014, still significant **increases on catalogue CDI (+5 188), CSR (+139)** and not much on **EDMO (+4), EDMED (+7), EDMERP (+3)**

No activities on **EDIOS-PRG**.

10 partners SDN have input data in the CDI catalogue, for a total increase of 3275 records.

Details of last month upgrades per partners are the following:

<b>CDI partner</b>	<b>Country</b>	<b>Number of new records</b>
<b>IEO</b>	Spain	<b>111</b>
<b>IFREMER</b>	France	<b>-10</b>
<b>IMGW</b>	Poland	<b>-54</b>
<b>INRH</b>	Morocco	<b>328</b>
<b>LIAE</b>	Latvia	<b>296</b>
<b>METU-IMS</b>	Turkey	<b>2 346</b>
<b>MSI</b>	Estonia	<b>182</b>
<b>MUMM</b>	Belgium	<b>-4</b>
<b>NIOZ</b>	Netherlands	<b>107</b>
<b>OGS</b>	Italy	<b>119</b>
<b>Total</b>		<b>3 421</b>

10 partners, not in the SeaDataNet consortium, have input a total of 1767 new entries in the CDI catalogue, which explains the difference between the total increase of CDI catalogue (5 188) and the increase by SeaDataNet partners (3 421).

Since the beginning of the follow-up reports (October 2012), the global increase in CDI, per partner, is the following: Note that for SMHI and TSU-DNA, the negative global increase is due to the change in their time series management (SMHI) or the duplicates detection (TSU-DNA).

CDI partner	Name of partner	Country	Total CDIs (02/07/2014)	Global increase
<b>SMHI</b>	Swedish Meteorological and Hydrological Institute	Sweden	92 472	-17 055
<b>TSU-DNA</b>	Iv.Javakhishvili Tbilisi State University, Centre of Relations with UNESCO Oceanological Research Centre and GeoDNA (UNESCO)	Georgia	846	-49
<b>MRI</b>	Marine Research Institute (MRI)	Iceland	3 824	0
<b>UOM</b>	International Ocean Institute - Malta Operational Centre (University Of Malta) / Physical Oceanography Unit	Malta	628	0
				0
<b>IOPAN</b>	IOPAN	Poland	18	18
<b>IGEWE</b>	IGEWE	Albania	21	21
<b>IMBK</b>	Institute of Marine Biology (IMBK)	Montenegro	51	29
<b>IOF</b>	Institute of Oceanography and Fisheries	Croatia	1 625	49
<b>CNR</b>	CNR	Italy	118	118
<b>SIO-RAS</b>	P.P.Shirshov Institute of Oceanology-RAS	Russian Federation	38 973	150
<b>RSHU</b>	RSHU	Russian Federation	209	209
<b>NIB</b>	National Institute of Biology - NIBMarine Biology Station	Slovenia	4 370	250
<b>IOLR</b>	Israel Oceanographic and Limnological Research (IOLR)	Israel	5 399	326
<b>VLIZ</b>	Flanders Marine Institute	Belgium	1 967	348
<b>EPA</b>	Environmental Protection Agency (EPA)	Lithuania	818	405
<b>ENEA</b>	ENEA Centro Ricerche Ambiente Marino - La Spezia	Italy	8 560	486
<b>INRH</b>	Institut National de Recherche Halieutique	Morocco	536	536
<b>IO-BAS</b>	Bulgarian National Oceanographic Data Centre(BGODC)	Bulgaria	2 858	550
<b>NIOZ</b>	NIOZ Royal Netherlands Institute for Sea Research	Netherlands	5 263	634
<b>MUMM</b>	Management Unit of the North Sea and Scheldt estuary Mathematical Models	Belgium	12 245	712
<b>MHI</b>	Marine Hydrophysical Institute	Ukraine	96 074	726
<b>INSTM</b>	Institut National des Sciences et Technologies de la Mer	Tunisia	867	867
<b>NIMRD</b>	National Institute for Marine Research and Development Grigore Antipa	Romania	5 247	993
<b>TUBITAK-SHODB</b>	Turkiye Bilimsel ve Teknolojik Arastirma Kurumu	Turkey	1 185	1 185
<b>LIAE</b>	Latvian Institute of Aquatic Ecology	Latvia	1 542	1 235
<b>OC-UCY</b>	Cyprus Oceanography Center	Cyprus	3 245	1 690
<b>HCMR</b>	Hellenic Centre for Marine Research	Greece	14 113	2 089
<b>IHPT</b>	IHPT, Hydrographic institute	Portugal	3 298	2 393

<b>MI</b>	Marine Institute	Ireland	7 287	2 586
<b>IBSS</b>	Institute of Biology of the Southern Seas	Ukraine	4 897	2 791
<b>IEO</b>	IEO/Spanish Oceanographic Institute	Spain	35 365	3 950
<b>ICES</b>	ICES	Denmark	4 986	4 986
<b>UniHb</b>	Universitaet Bremen	Germany	5 264	5 264
<b>RIHMI-WDC</b>	All-Russia Research Institute of Hydrometeorological Information - World Data Centre (RIHMI-WDC) National Oceanographic Data Centre (NODC)	Russian Federation	62 486	5 361
<b>OGS</b>	OGS (Istituto Nazionale di Oceanografia e di Geofisica Sperimentale)	Italy	99 438	9 840
<b>IMGW</b>	Instytut Meteorologii i Gosodarki Wodnej	Poland	11 286	11 286
<b>FMI</b>	Finnish Meteorological Institute	Finland	13 500	11 289
<b>MSI</b>	Marine Systems Institute at Tallinn University of Technology	Estonia	25 941	12 944
<b>BSH-DOD</b>	German Oceanographic Datacentre (NODC)	Germany	37 090	19 812
<b>METU-IMS</b>	Institute of Marine Sciences, Middle East Technical University	Turkey	25 558	22 476
<b>NERC-BODC</b>	British Oceanographic Data Centre	United Kingdom	75 690	27 633
<b>IFREMER</b>	IFREMER / IDM/SISMER	France	235 293	29 094
<b>NERI</b>	Aarhus University	Denmark	205 488	41 334
<b>IMR</b>	Institute of Marine Research - Norwegian Marine Data Centre (NMD)	Norway	87 829	73 036
<b>SHOM</b>	SHOM (Service Hydrographique et Océanographique de la Marine)	France	161 030	154 607
		<b>Total</b>	<b>1 404 800</b>	<b>437 204</b>

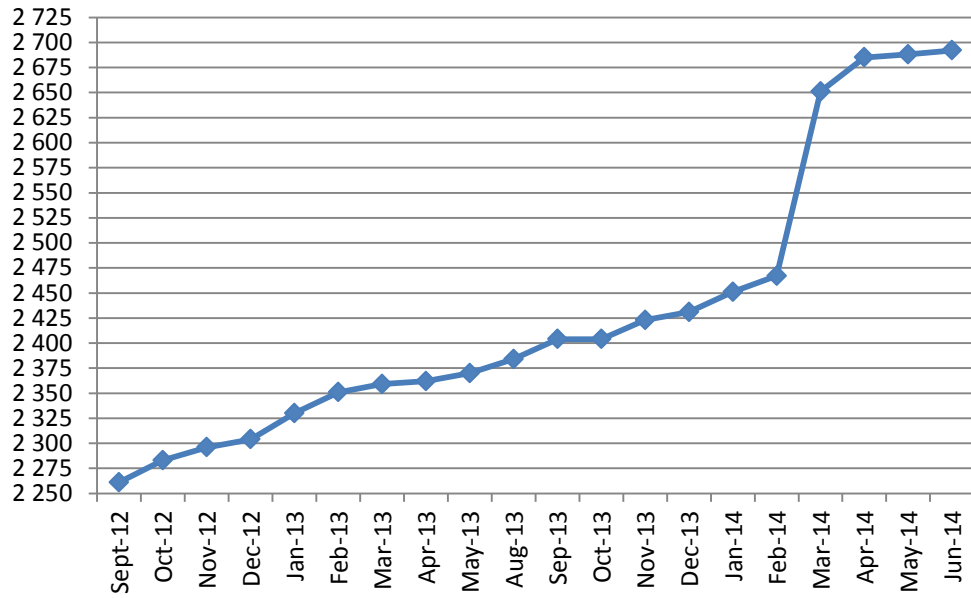
Catalogue	Sept-12	Oct-12	Nov-12	Dec-12	Jan-13	Feb-13	Mar-13	Apr-13	May-13	Aug-13	Sep-13	Oct-13	Nov-13	Dec-13
EDMO	2 261	2 283	2 296	2 304	2 330	2 351	2 359	2 362	2 370	2 384	2 404	2 404	2 423	2 431
EDMED	3 834	3 834	3 834	3 834	3 834	3 834	3 882	3 885	3 885	3 889	3 901	3 901	3 925	3 944
EDMERP	2 617	2 637	2 667	2 674	2 683	2 684	2 685	2 686	2 690	2 698	2 710	2 710	2 772	2 772
EDIOS-PRG	350	350	350	350	353	353	353	353	354	356	358	359	359	359
CSR	41 330	41 481	41 832	42 256	43 423	43 539	43 782	44 153	43 479	43 687	43 713	43 765	44 094	44 236
CDI	1088322	1097399	1241010	1267669	1274982	1291491	1302629	1311827	1317191	1350455	1356245	1360236	1386446	1496950

Figure 1 - Global counts on all catalogues in 2012/2013

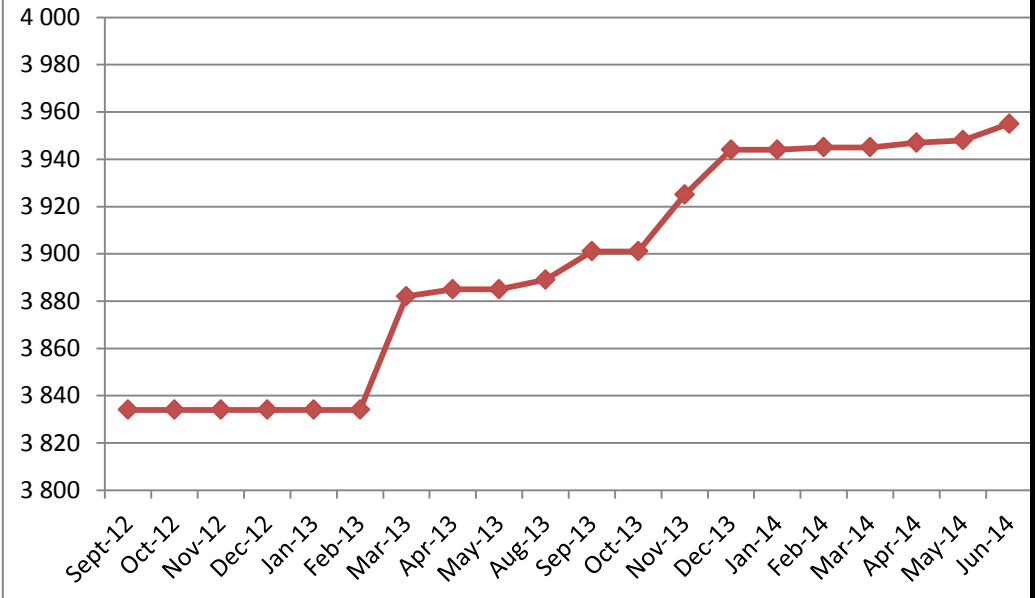
Catalogue	Jan-14	Feb-14	Mar-14	Apr-14	May-14	Jun-14
EDMO	2 451	2 467	2 651	2 685	2 688	2 692
EDMED	3 944	3 945	3 945	3 947	3 948	3 955
EDMERP	2 787	2 808	2 830	2 832	2 834	2 837
EDIOS-PRG	359	360	360	360	360	360
CSR	44 230	44 294	44 447	44 518	44 518	44 657
CDI	1 498 793	1 537 556	1 558 428	1 566 528	1 569 847	1 575 035

Figure 2 - Global counts on all catalogues in 2014

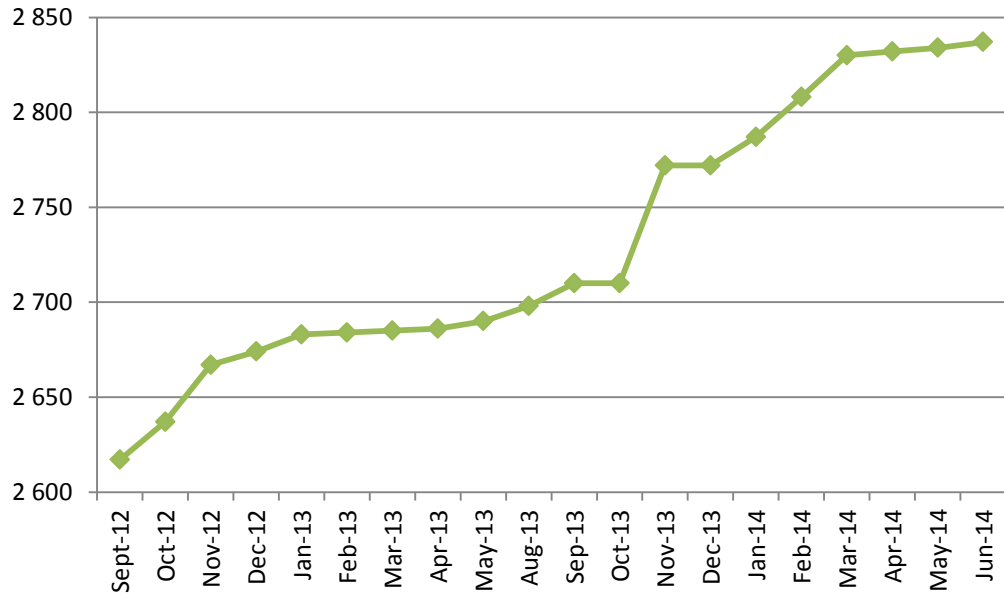
## EDMO



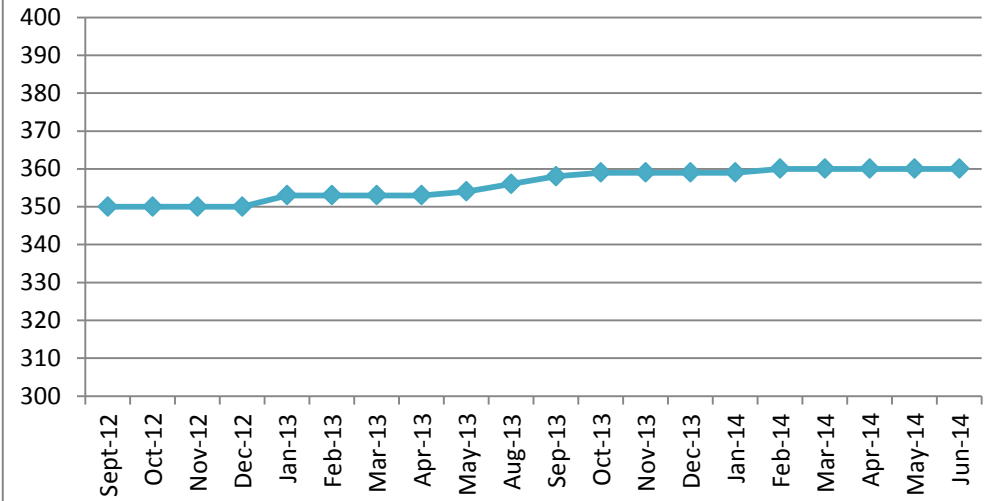
## EDMED



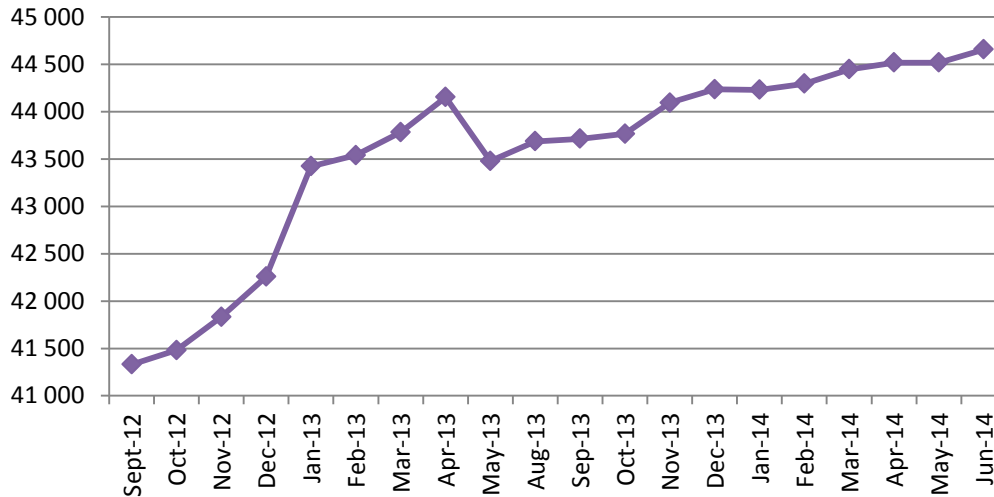
### EDMERP



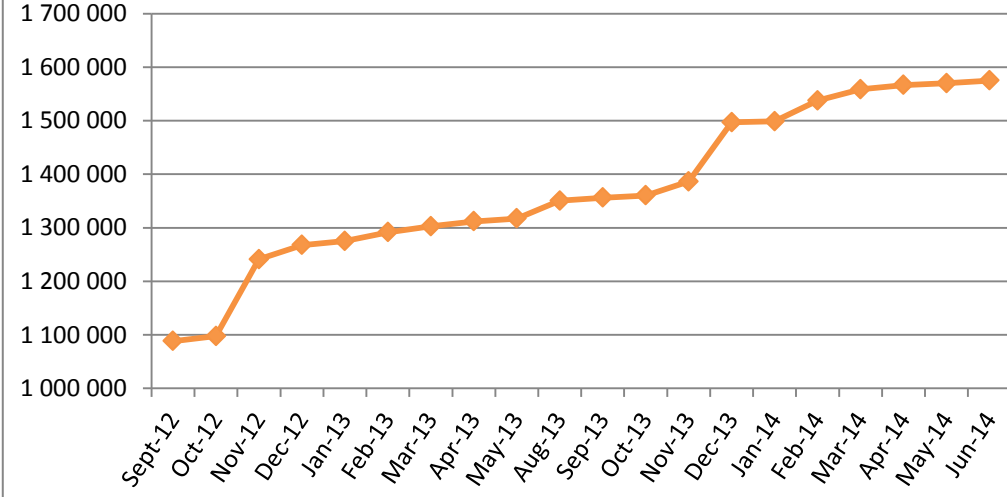
### EDIOS-PRG



### CSR



### CDI



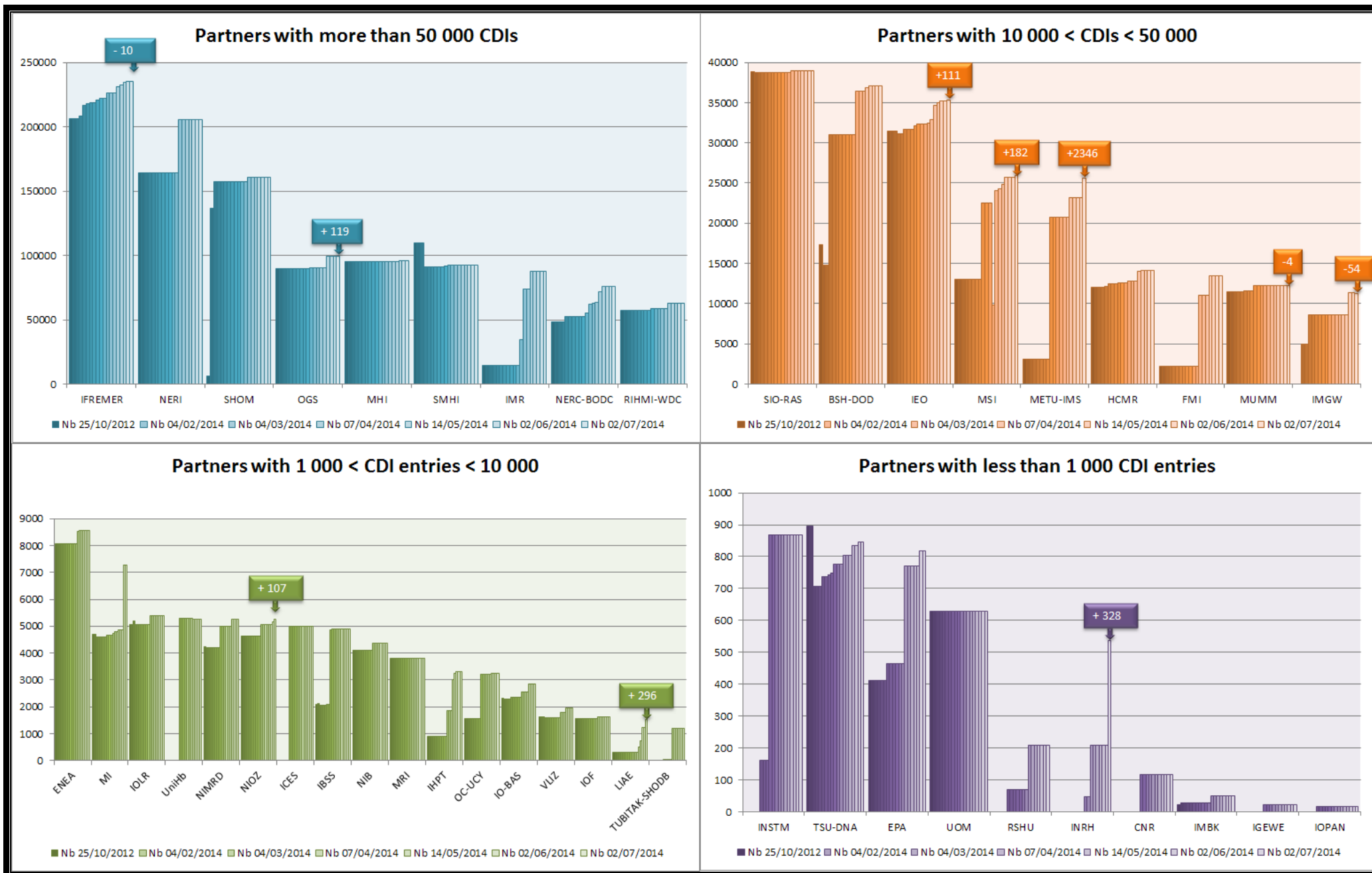


Figure 3 - Nb of CDI per partner, data centres with new data input in June 2014