



ETT

**We are an international digital and creative
industry, specialised in technological and
cultural innovation, software development and
consulting services**

Genoa / Rome / Milan / London

Our Business Areas

New Media

**Smart
Government**

**Research &
Development**

Shareholdings

 SPACE

XEDUM

 FOCUS

CONSORZIO
 TRAIN

 stress

CONSORZIO
TECNOMAR
LIGURIA

Education and Skills

User driven innovation

Society and Growth



In Strategic Partnership with:



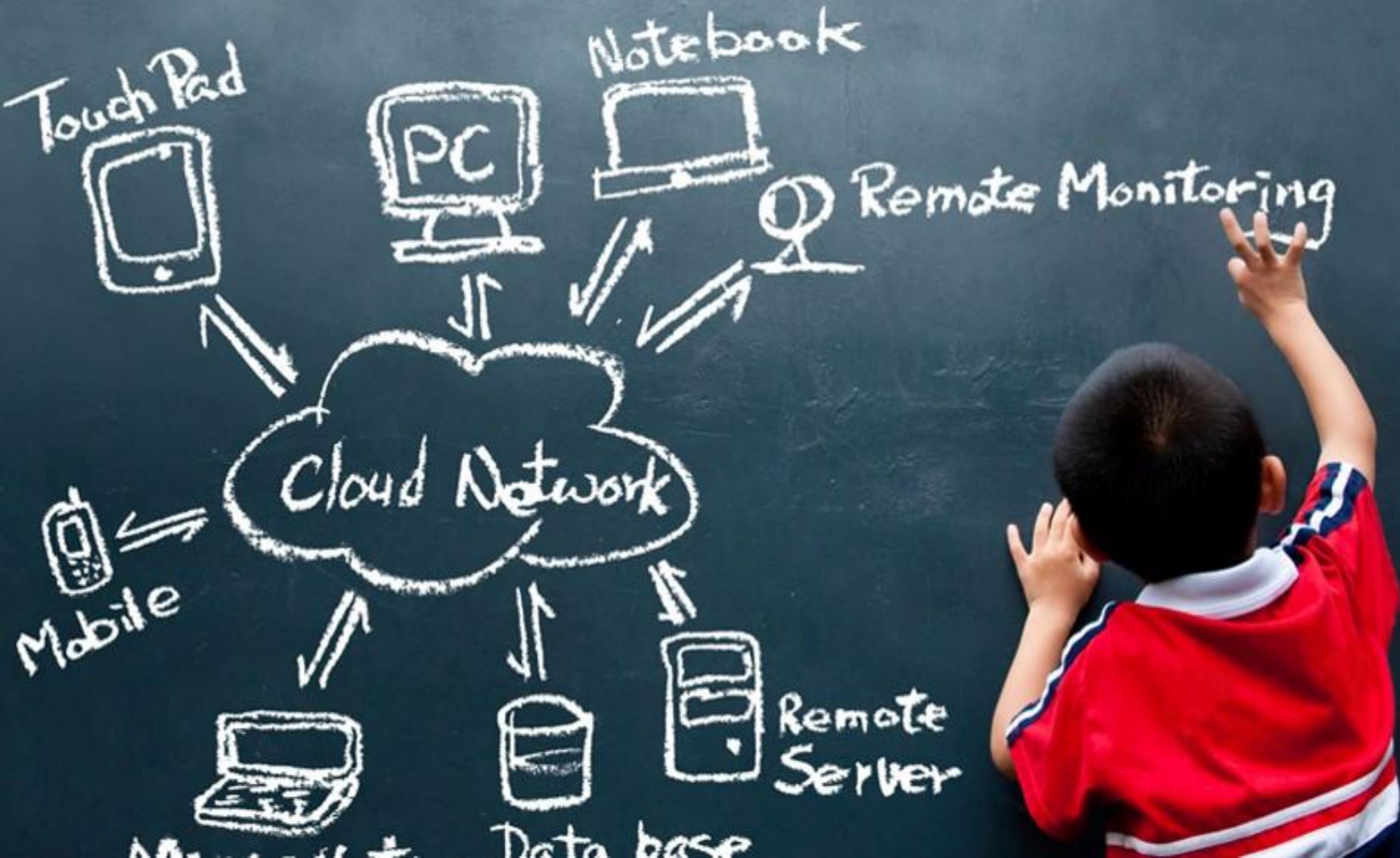
PHILIPS



 imagineear



Education and Skills



ACQUARIO
DI GENOVA

GENOA



CATEGORIES

VIRTUAL REALITY
LEARNING AND
DISCOVERING IMMERSIVE
3D

OUR EXPERTISE

ART DIRECTION + GRAPHIC
DESIGN SOFTWARE
DEVELOPMENT

One of the first permanent virtual reality installations in Italy and Europe, this is a journey into the depths to get a close view of sea species. The application is designed for the Samsung Gear VR, augmented reality viewers, and may be enjoyed while seated on audio-fitted chairs specially made by Natuzzi Italia, the world's most popular Made in Italy design brand among clients of luxury goods. Visitors take a spectacular journey into the depths of the abyss.

[WATCH VIDEO](#)

[WATCH](#)
[PHOTOGALLERY](#)

DIGITALY TOUR

WASHINGTON USA



CATEGORIES

CULTURAL HERITAGE
MIXED REALITY
(AR+VR) VIRTUAL
TOUR
IMMERSIVE 3D
EXPERIENCES

OUR EXPERTISE

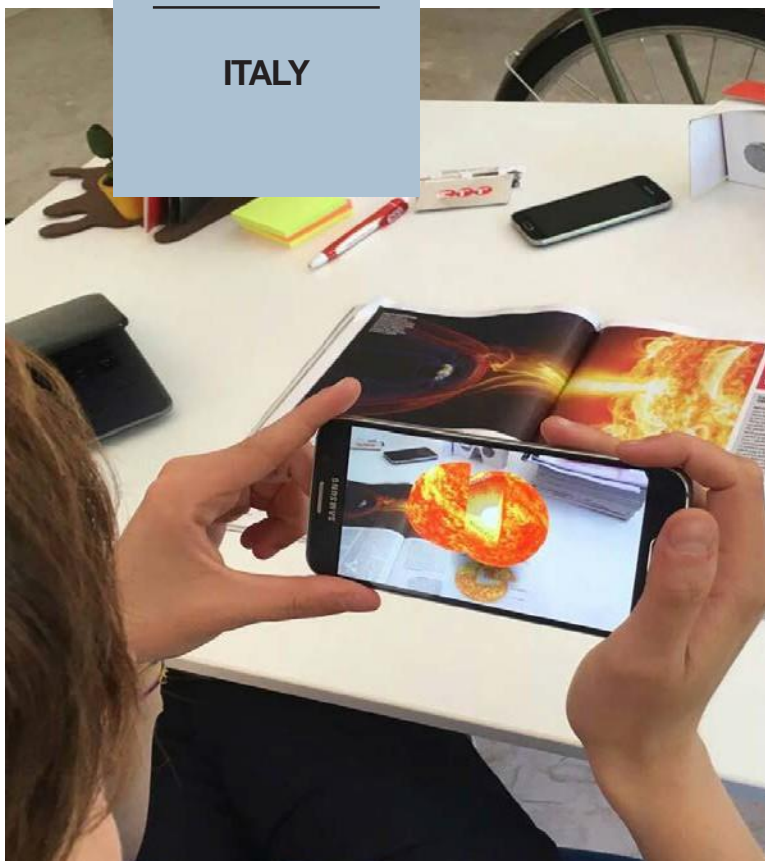
ART DIRECTION + GRAPHIC
DESIGN SOFTWARE
DEVELOPMENT

[WATCH](#)
[PHOTOGALLERY](#)

ETT, thanks to its experience in the smart tourism field, has been invited to attend the “EU Open House Embassies” event on 14th May at the Italian Embassy in Washington, USA. DIGITALY TOUR was specially created for this occasion by ETT. It is a state-of-the-art Mixed Reality application showing innovative and engaging virtual settings at some of the most important Italian touristic sights. Using a specially designed Cardboard device, the app explores a map of Italy in Augmented Reality mode, identifying places of tourist or cultural significance. While on the visit, DIGITALY TOUR is used to select and view points of interest in Virtual Reality, observing 360-degree panoramic pictures.

FOCUS
MAGAZINE

ITALY



CATEGORIES

AUGMENTED
REALITY
PUBLISHING

OUR EXPERTISE

SOFTWARE
DEVELOPMENT
TECHNICAL
COORDINATION

WATCH
VIDEO

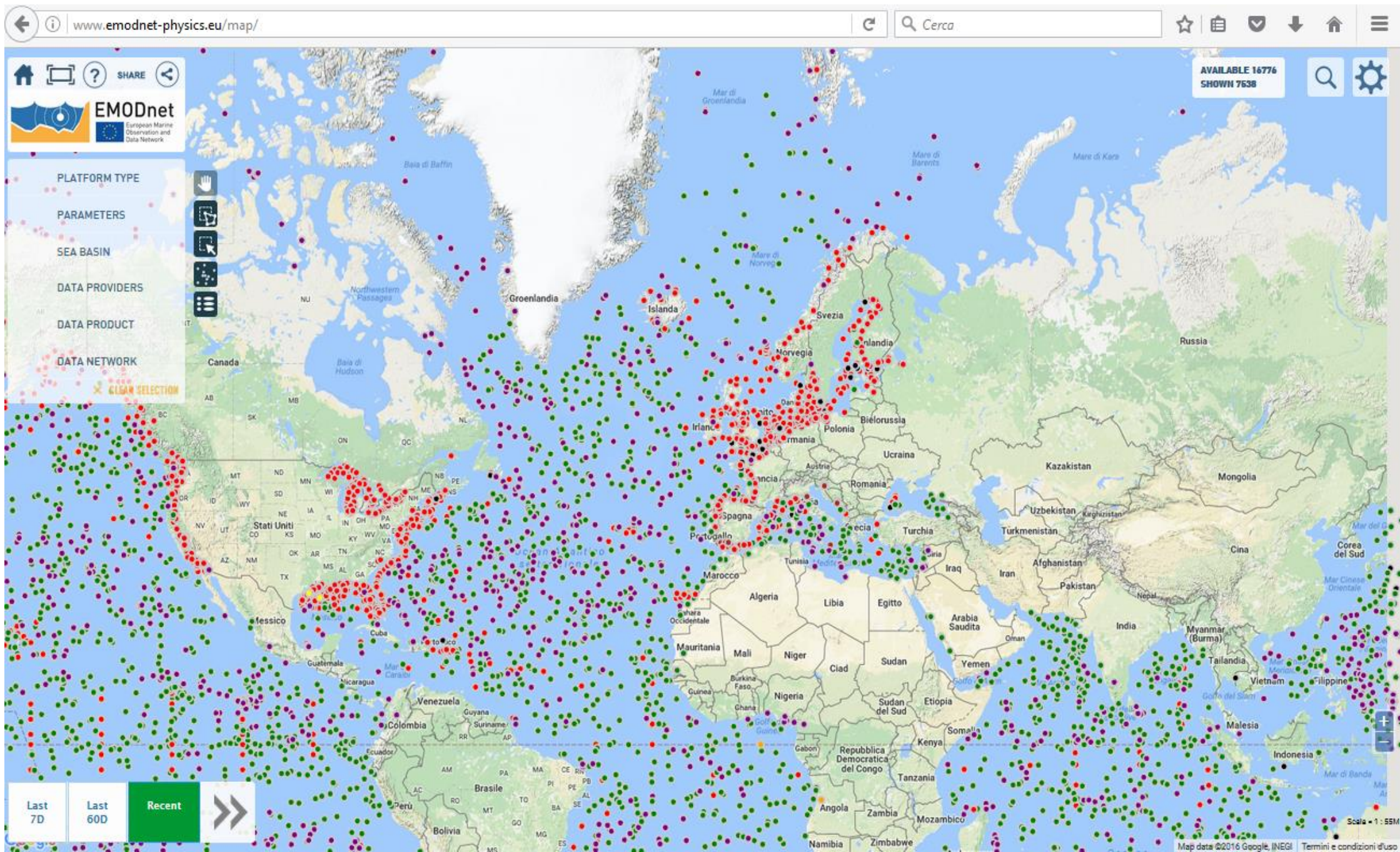
Focus, the Mondadori magazine dedicated to science, issues a special Augmented Reality number. Thanks to a new app, developed by ETT, readers of the magazine can partake in an innovative content-viewing experience.

A free app, "Focus Augmented Reality", has been developed to mark the occasion. It is available on AppStore and Google Play, and readers can follow-up magazine content with innovative and navigable 360-degree 4K videos, rendered in 3D. After launching the app and aiming the camera at the Focus magazine page, the images come to life, creating a new "anytime anywhere" smartphone and tablet experience and turning the magazine into a truly innovative device.

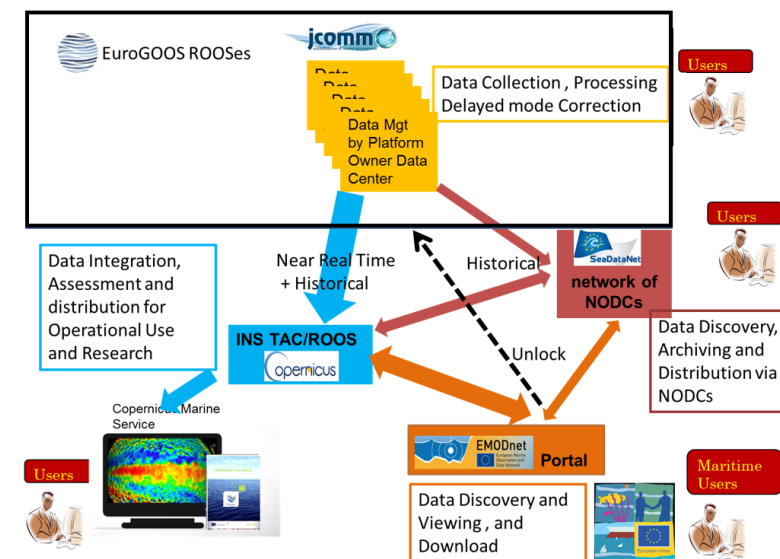
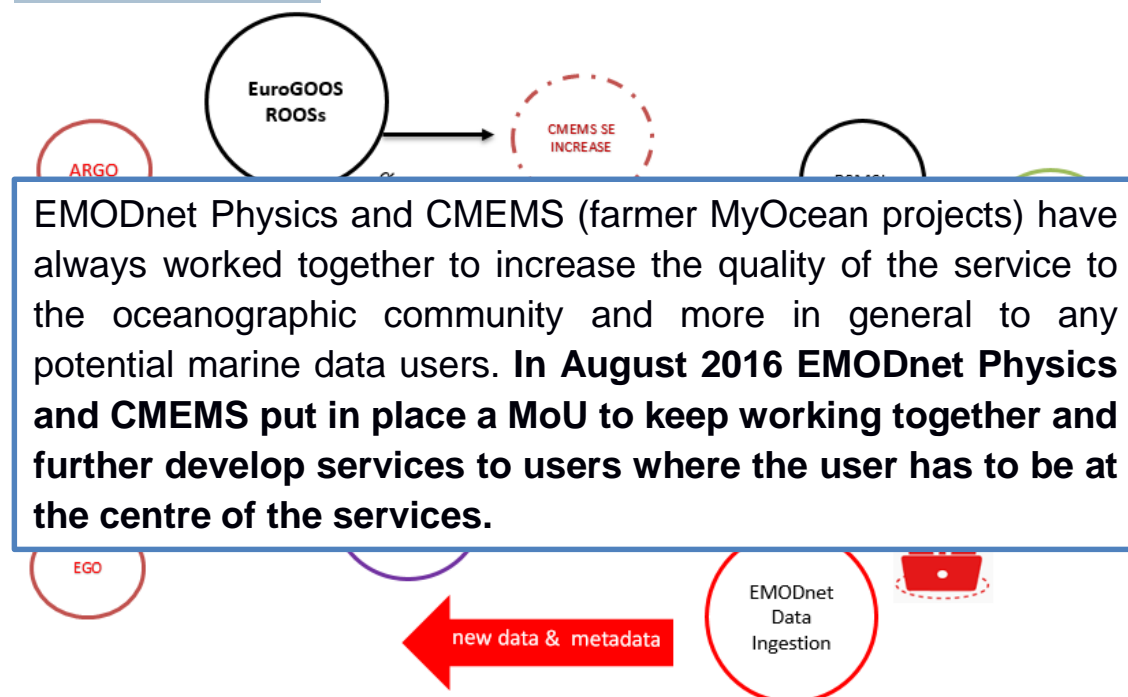
Case History



Marine Data and Information Systems

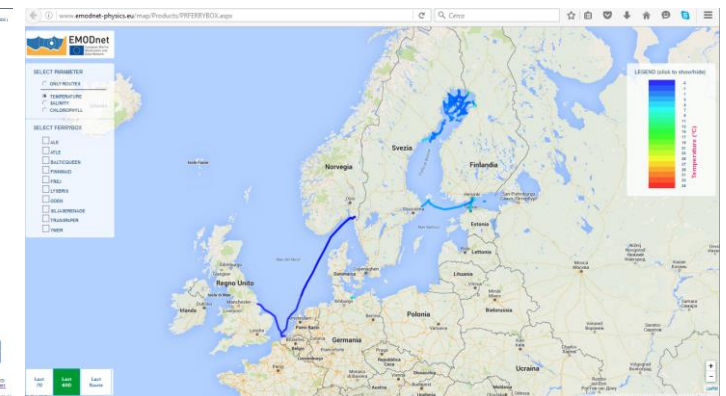
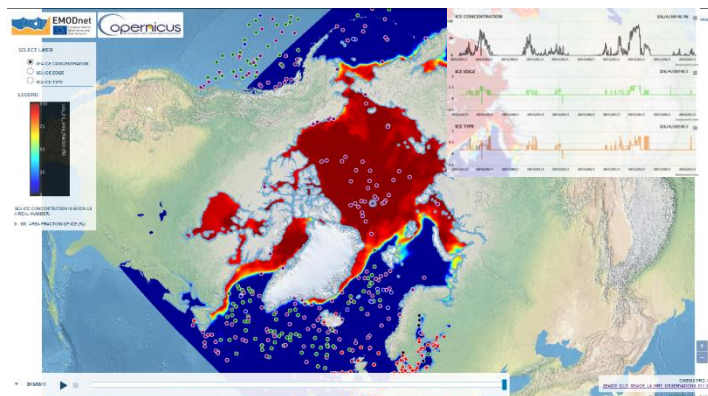
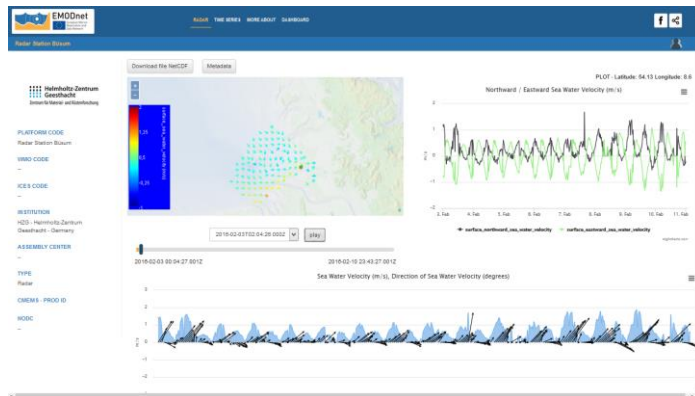
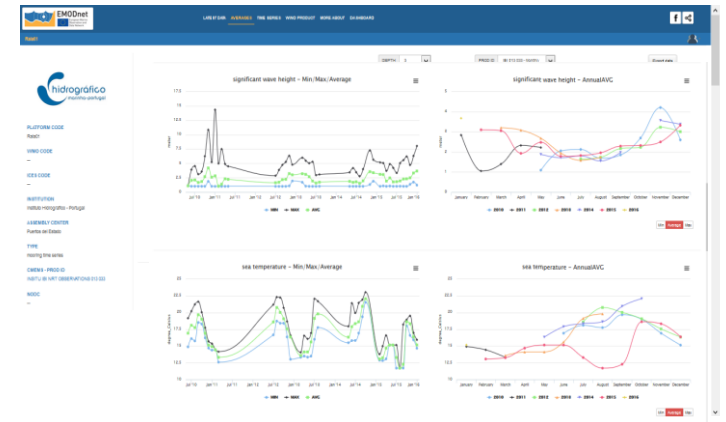
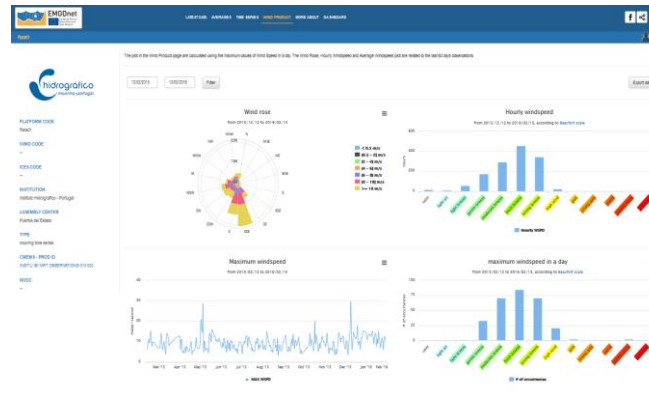
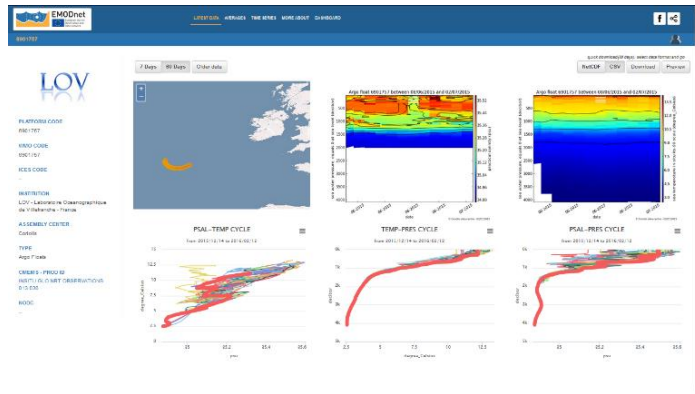


EMODnet Physics



ETT is developing the current **EMODnet Physics** data portal that is a **gateway** to national, regional and thematic **near real time and historical data repositories**. A comprehensive network has been developed during the years and the actual project is directly involving and connecting data and dataproducts from tens of institutions from all over Europe. **EMODnet Physics is developed in coordination and cooperation with EuroGOOS and ROOSs, CMEMS INSTAC and SeaDataNet network of NODCs**. The marine data from diverse sources are made more visible, accessible and interoperable. Data and data products are accompanied by metadata covering information on ownership, data quality and data quality check procedures, as well as links to get more information on methods used for their constructions.

EMODnet Physics





Integrated
in Situ Chemical MAPPING probes



Home

The Schema Project

Consortium

News & Events

Dissemination

Links

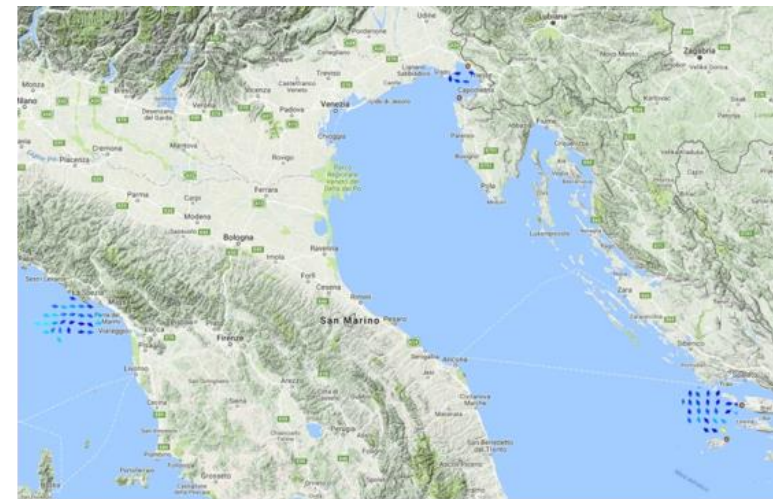
Contact Us



SCHeMA Project: FP7-OCEAN 2013.2 [G.A. 614002]. SCHeMA aims at providing an open and modular sensing solution for in situ high resolution mapping of a range of anthropogenic and natural chemical compounds that may have feedback (synergic) interaction: **toxic and/or essential Hg, Cd, Pb, As and Cu trace metal species; nitrate, nitrite, and phosphate nutrients; species relevant to the carbon cycle; volatile organic compounds; potentially toxic algae species and toxins.**

ETT is involved in different WPs of the project in order to develop an innovative web-based system interface for accessing, interacting and configuring the SCHeMA network controller, probes and sensors. **A specific task is the development of data accessibility and system interoperability according to the international OGC-SWE standards.** (<http://www.schema-ocean.eu>)

CMEMS SE INCREASE



INCREASE CMEMS Service Evolution project: the **“Innovation and Networking for the integration of Coastal Radars into European mArine Services”** is one of the CMEMS R&D service evolution projects. ETT is co-developing the projects in cooperation and collaboration with AZTI. One of the ETT roles in the project is the **development of the infrastructure and data portal to integrate and offer HFR data products**. The already available infrastructure is integrating and offering data from (Spain, Germany, Slovenia, Italy, Malta and Croatia)

<https://www.mercator-ocean.fr/en/portfolio/increase-2/>
<https://thredds.emodnet-physics.eu/threddsINCREASE/catalog.html>

And more

EMODnet Data Ingestion and Safe keeping: ETT is the WP3 leader and is coordinating **the machine-to-machine service** development and adoption. Specific focus are the implementation of **SWE based near real time data stream, identification of new data and data provider, closing the gap in the management of near real time and historical “orphan” data**

AtlantOS Project: H2020-BG-2014-2. [G.A. 633211]. ETT is involved in the project WP7 “**Data flow and data integration**” that is aimed at improving the observational infrastructures currently managed by a variety of consortia, networks and infrastructures, with a particular focus on efficiently integrating the extremely heterogeneous data collected by the different observing platforms, into a coherent system. ETT is also involved in the WP9 “System evaluation and sustainability” that is working on **monitoring tools for the development and evaluation of a long-term, optimized Atlantic observing system.**
(<http://151.1.25.219/atlantos>)

JERICO-NEXT Project: H2020-INFRAIA-2014-2015 [G.A. 654410]. ETT is working in the WP5 “**Data management**” that is developing procedures and methodologies to enable data collected through the project to comply with the international standards regarding their quality and metadata. A specific focus is to keep **developing synergic direct links** with EMODnet Physics and the Copernicus Marine Core Service. (<http://151.1.25.219/jerico>)

ETT is **EMODnet Baltic Sea Check Point** WP13 leader and is in charge for the **web portal development. EMODnet BSCP data portal makes available data products** developed under the challenges as well as integrates data products from external sources. The dynamic map allows the user to see more data products at once (layers and time series)

<http://www.emodnet-baltic.eu/map>
<http://www.emodnet-baltic.eu/map/DefaultMap.html#636063381790333331>

ETT and SeaDataCloud

our positioning: Expertise in open data, big data, internet of things, human-computer-interface, new media and social media apps, ... computer science, informatics, system integration and software engineering

present focus is on information system for ocean observation

in SeaDataCloud we are going to:

- Support design and development of tools and services for scientific validation and long term stewardship of the observation data complementing and integrating the operational stream (CMEMS INSTAC) by **establishing an official long-term arrangement with the Copernicus Marine Environmental Monitoring Service (CMEMS**
- developing new technology, standards and services, using Sensor Web Enablement (SWE), for managing and giving access to real-time data streams from observing networks and new autonomous observing platforms,
- **Support the developing of advanced services for search, processing, analytics, quality, visualization, with a focus on SOS viewing services for operational data streams**
- support on **Progressing the Platform Register**
- Support the development of interoperability services to facilitate data processing and validation, with a focus on **Ingesting, validating, long-term storage and access of HF Radar data**
- Support the dissemination

We are involved in:

- WP2. NA1. Project network coordination (1MM),
- WP4. NA3. Communication, dissemination and exploitation development (0.5 MM)
- WP8. JRA 2. Governance of standards and development of common services (1MM)
- WP9. JRA 3. Developments of upstream services (7MM)
- WP10. JRA 4. Developments of downstream services (7MM)



PEOPLE AND TECHNOLOGY

ETT S.p.A.

GENOA

Via Sestri, 37
16154 Genoa

ROME

Via Giulio Venticinque, 38
00136 Rome

MILAN

Viale Abruzzi, 20
20131 Milan

ETT Solutions Ltd.

81 Rivington Street
EC2A 3AY, London -
UK

www.ettsolutions.com

