

# January 2019 – SeaDataCloud catalogues follow-up

All documents used to write this report are available on the extranet of the project under [SeaDataCloud > Follow up](#).

## Statistics on all catalogues

In January 2019, global increases on catalogues :

- **CDI (Data)** : **+5 943,**
- **CSR (Cruises)** : **+94,**
- **EDMO (Marine organisations)** : **+27,**
- **EDMERP (Projects)** : **+19,**
- **EDMED (Data sets)** : **+11**

and no increase for

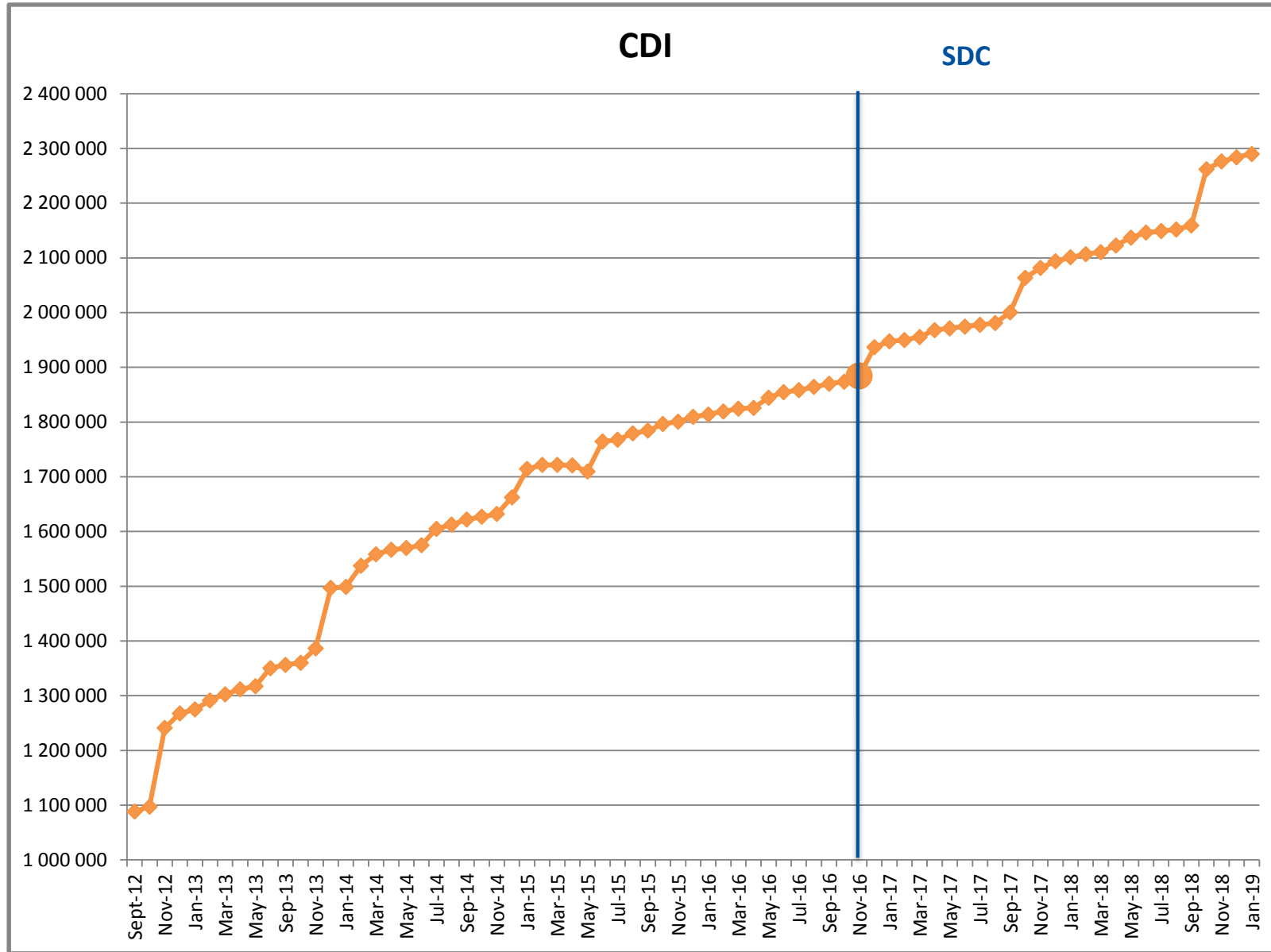
- **EDIOS-PRG (Programmes)** .

## Since the beginning of SeaDataCloud :

| Catalogue | Jan-19    | Dec-18    | Nov-18    | Oct-18    | Sep-18    | Aug-18    | Jul-18    | Jun-18    | May-18    | Apr-18    | Mar-18    | Feb-18    | Increase* |
|-----------|-----------|-----------|-----------|-----------|-----------|-----------|-----------|-----------|-----------|-----------|-----------|-----------|-----------|
| EDMO      | 4 105     | 4 078     | 4 068     | 4 021     | 4 010     | 3 999     | 3 997     | 3 981     | 3 968     | 3 952     | 3 940     | 3 931     | 347       |
| EDMED     | 4 198     | 4 187     | 4 187     | 4 182     | 4 191     | 4 189     | 4 173     | 4 170     | 4 166     | 4 166     | 4 162     | 4 158     | 121       |
| EDMERP    | 3 125     | 3 106     | 3 105     | 3 083     | 3 073     | 3 071     | 3 068     | 3 062     | 3 058     | 3 054     | 3 051     | 3 048     | 150       |
| EDIOS-PRG | 363       | 363       | 363       | 363       | 363       | 363       | 363       | 317       | 317       | 362       | 362       | 362       | 1         |
| CSR       | 56 877    | 56 783    | 56 694    | 56 436    | 56 316    | 56 085    | 55 982    | 55 937    | 55 783    | 55 709    | 55 630    | 55 485    | 56 877    |
| CDI       | 2 289 929 | 2 283 986 | 2 276 264 | 2 262 108 | 2 159 216 | 2 152 074 | 2 148 856 | 2 146 266 | 2 137 067 | 2 122 824 | 2 110 688 | 2 106 680 | 416 106   |

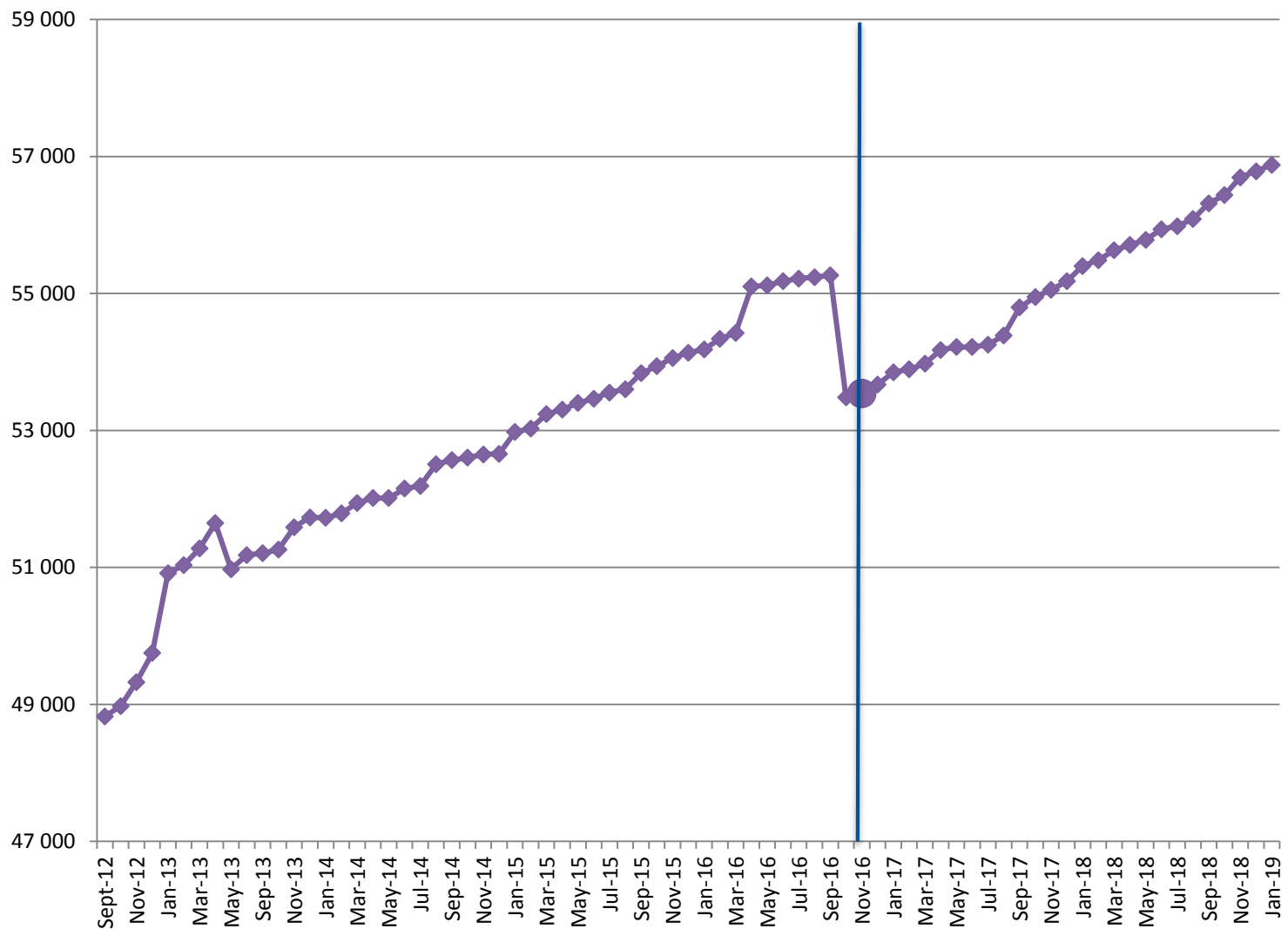
(\*) Increase since beginning of SeaDataCloud (01/11/2016)

Nb of EDMO, EDMED, EDMERP, EDIOS, CSR and CDI per month



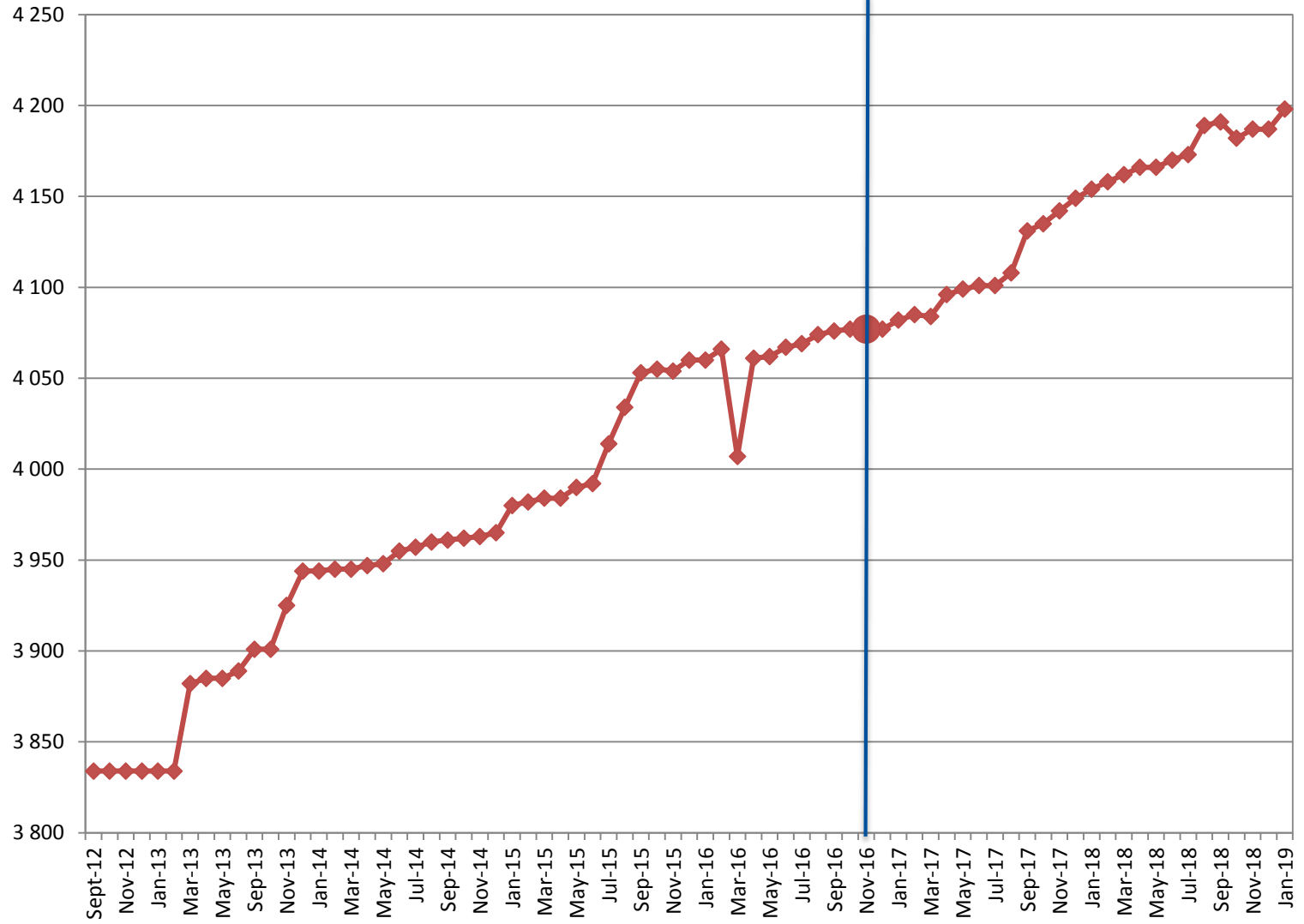
CSR

SDC



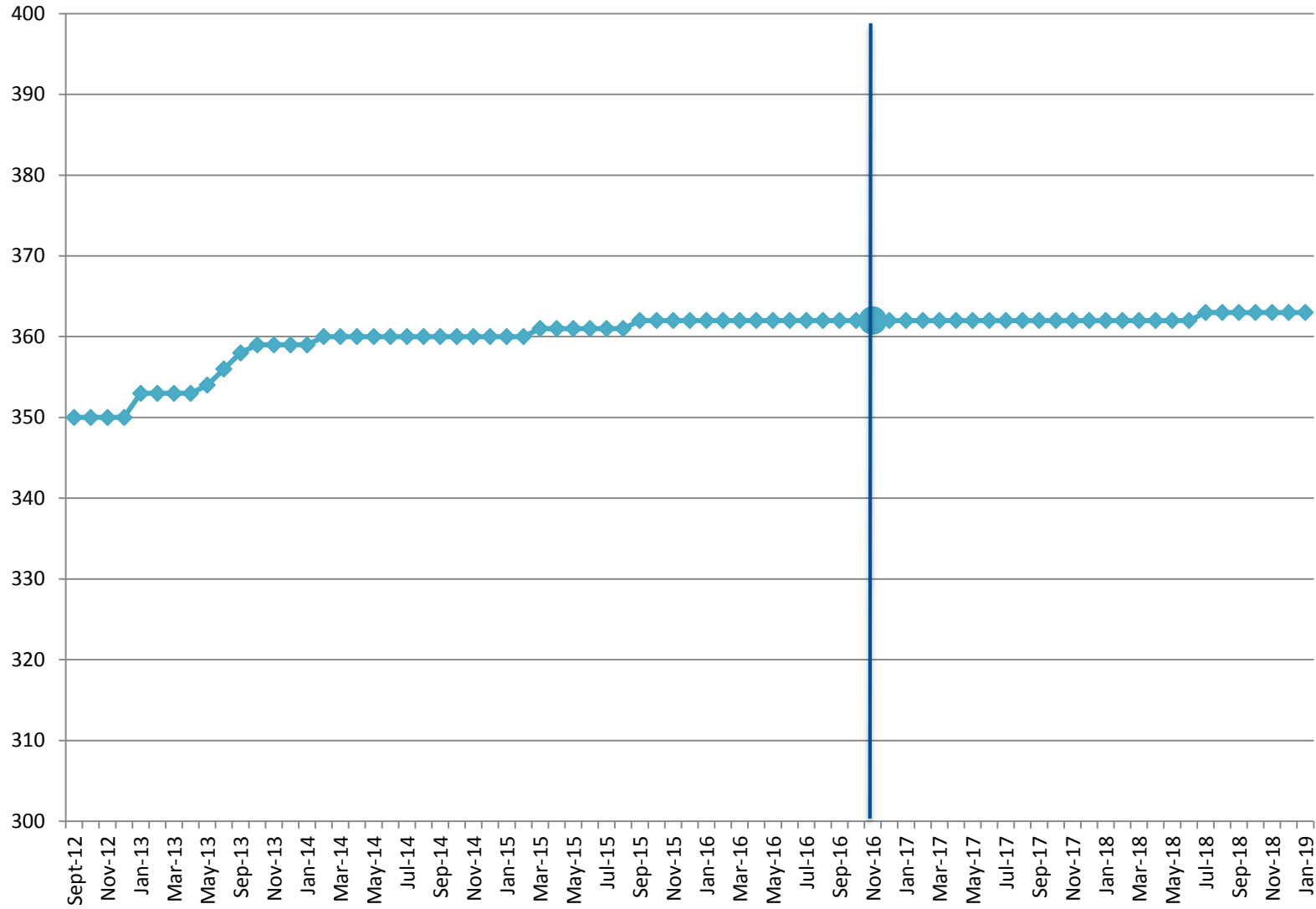
EDMED

SDC



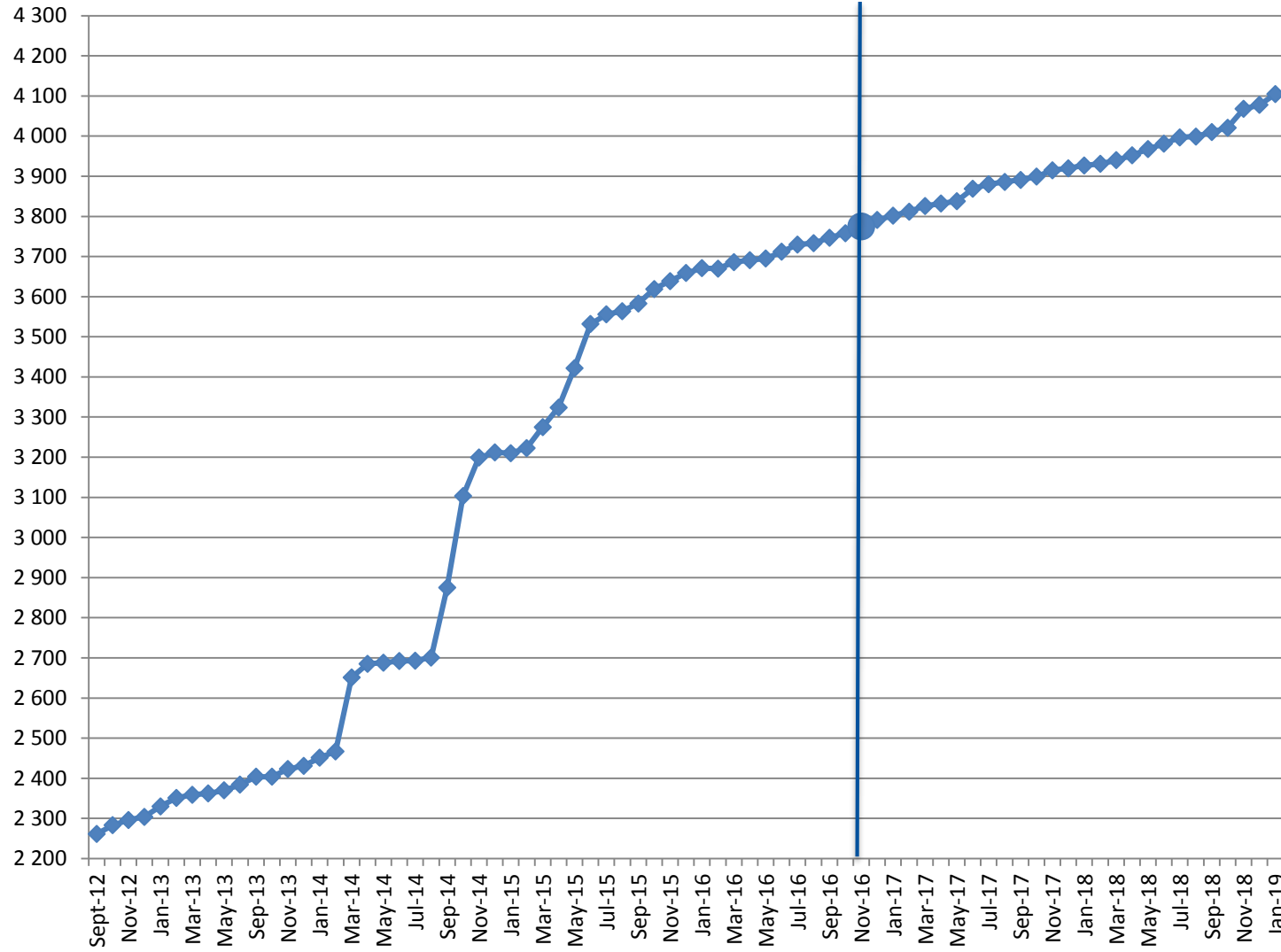
**EDIOS-PRG**

**SDC**



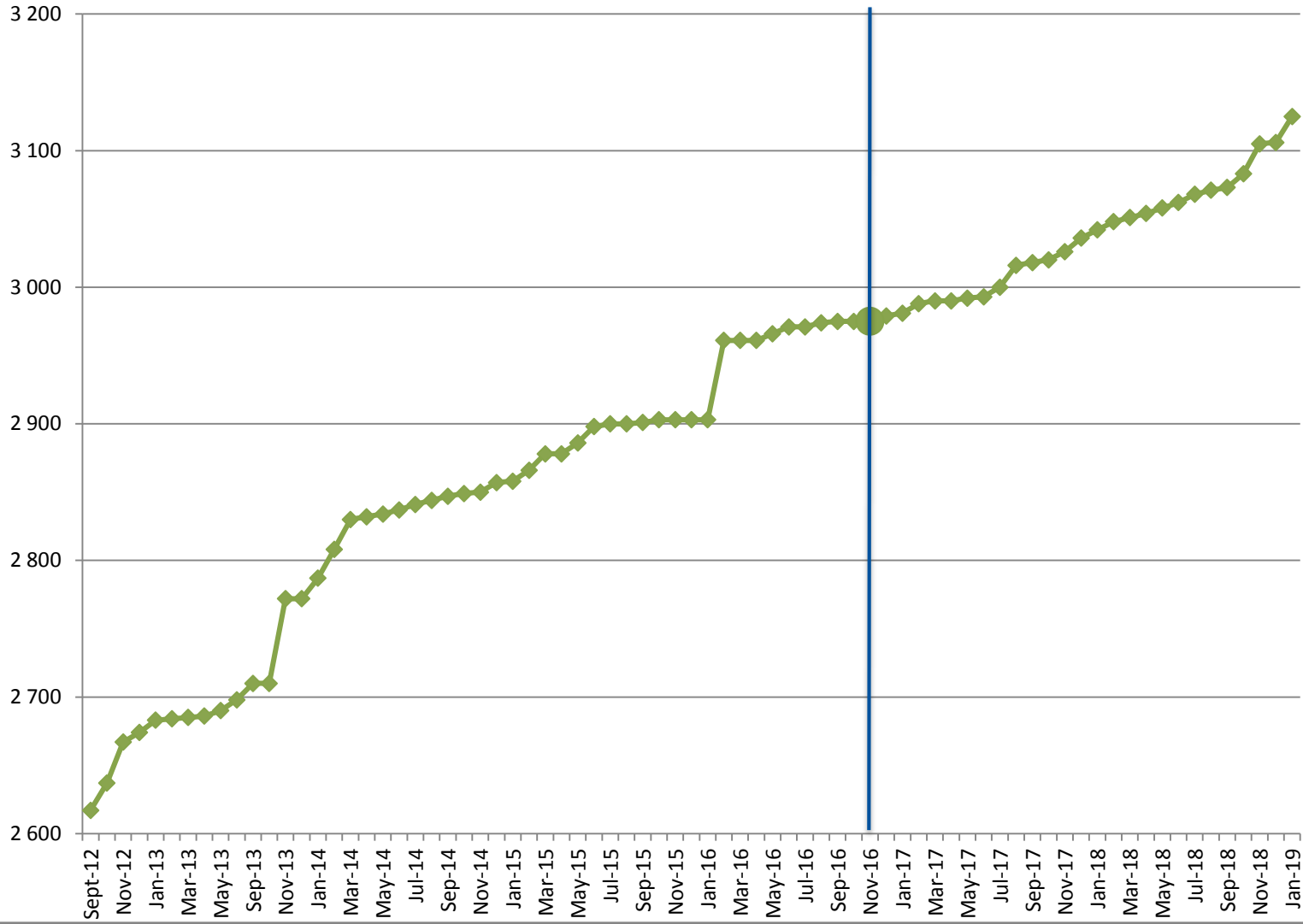
EDMO

SDC



# EDMERP

# SDC



## Statistics on CDI catalogue

Details of last month upgrades per partners are the following:

| CDI partner  | Country            | Last increase |
|--------------|--------------------|---------------|
| IEO          | Spain              | 368           |
| IOLR         | Israel             | 299           |
| IFREMER      | France             | 3 043         |
| NIB          | Slovenia           | 96            |
| ORION        | Cyprus             | 138           |
| RIHMI-WDC    | Russian Federation | -17           |
| TSU-DNA      | Georgia            | 31            |
| UKRI-BODC    | United Kingdom     | 1 527         |
| UOM          | Malta              | 456           |
| <b>TOTAL</b> |                    | <b>5 941</b>  |

- 9 SeaDataCloud partners have input data in the CDI catalogue, for a total increase of **+5 941 records**,
- an other partner, not in the SeaDataCloud consortium, have worked for a increase of **+2 records**.

There are 114 partners with CDIs :

- 42 SeaDataCloud partners and
- 72 other partners.



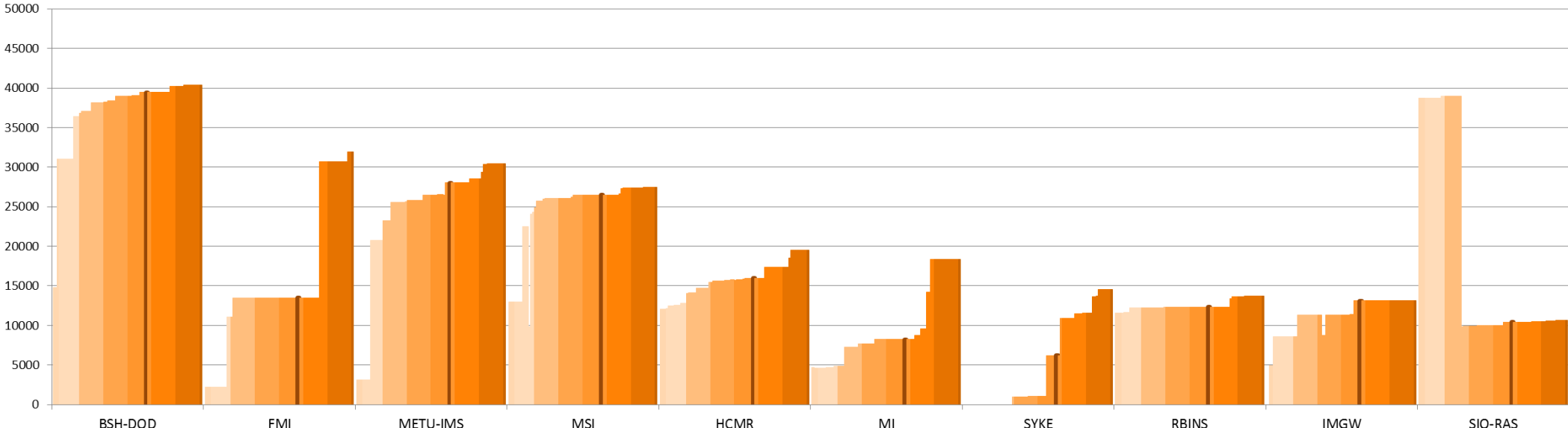
Since the beginning of the follow-up reports (October 2012), the increase in CDI since start SDC (November 2016), between end SDN2 (September 2015) and start SDC, increase since SDN2, per partner, is the following: Note that for SMHI and SIO-RAS the negative increase since start SDN2 is due to the change in their time series management (SMHI), the change of data owner and the remove of incorrect records (SIO-RAS). The new owner is SOI, not in the SeaDataCloud consortium).

| CDI partner  | Name of partner  | Country            | Nb<br>02/01/2019 | Increase<br>since start<br>SDC | Increase<br>between<br>SDN2 and<br>SDC | Increase<br>since start<br>SDN2 |
|--------------|--|--------------------|------------------|--------------------------------|--|---------------------------------|
| GEOMAR       | Helmholtz Centre for Ocean Research Kiel                                   | Germany            | 0                | 0                              | 0                                      | -                               |
| IOPAN        | IOPAN  | Poland             | 18               | 0                              | 0                                      | 18                              |
| IMGW         | Instytut Meteorologii i Gosodarki Wodnej                                   | Poland             | 13 110           | 0                              | 1 770                                  | 13 110                          |
| INSTM        | Institut National des Sciences et Technologies de la Mer                   | Tunisia            | 962              | -7                             | 0                                      | 962                             |
| CNRS/OSU-SBR | Roscoff Marine Station, Sorbonne Universités, UPMC Univ Paris 06 and CNRS  | France             | 2                | 2                              | 0                                      | 2                               |
| UTM-CSIC     | UTM-CSIC/Marine Technology Unit  | Spain              | 36               | 30                             | 0                                      | 36                              |
| CNRS/MIO     | CNRS/Mediterranean Institute of Oceanography-LUMINY (MIO)-UMR 7294/235/110 | France             | 67               | 67                             | 0                                      | 67                              |
| TSU-DNA      | Iv.Javakhishvili Tbilisi State University                                  | Georgia            | 1 110            | 158                            | 34                                     | 215                             |
| SIO-RAS      | P.P.Shirshov Institute of Oceanology-RAS                                   | Russian Federation | 10 625           | 184                            | 482                                    | -28 198                         |
| ENEA         | ENEA Centro Ricerche Ambiente Marino - La Spezia                           | Italy              | 9 279            | 190                            | 284                                    | 1 205                           |
| NIOZ         | NIOZ Royal Netherlands Institute for Sea Research                          | Netherlands        | 6 329            | 199                            | 46                                     | 1 700                           |
| VLIZ         | Flanders Marine Institute  | Belgium            | 3 779            | 207                            | 74                                     | 2 160                           |
| ORION        | ORION Joint Research and Development Center                                | Cyprus             | 208              | 208                            | 0                                      | 208                             |
| IHPT         | IHPT, Hydrographic institute   | Portugal           | 6 553            | 220                            | 1 713                                  | 5 648                           |
| IMBK         | Institute of Marine Biology (IMBK)   | Montenegro         | 946              | 240                            | 647                                    | 924                             |
| IOF          | Institute of Oceanography and Fisheries                                    | Croatia            | 2 484            | 251                            | 490                                    | 908                             |
| UkrSCES      | Ukrainian scientific center of Ecology of Sea (UkrSCES)                    | Ukraine            | 6 114            | 470                            | 267                                    | 6 114                           |
| CNR          | CNR - Institute of Atmospheric Sciences and Climate (ISAC) (Rome)          | Italy              | 874              | 621                            | 0                                      | 874                             |
| NIB          | National Institute of Biology - NIBMarine Biology Station                  | Slovenia           | 8 385            | 723                            | 287                                    | 4 265                           |
| UOM          | University Of Malta  | Malta              | 1 909            | 884                            | 393                                    | 1 281                           |
| MSI          | Marine Systems Institute at Tallinn University of Technology               | Estonia            | 27 427           | 953                            | -3                                     | 14 430                          |
| BSH-DOD      | German Oceanographic Datacentre (NODC)                                     | Germany            | 40 401           | 954                            | 465                                    | 23 123                          |
| LHEI         | Latvian Institute of Aquatic Ecology                                       | Latvia             | 4 468            | 984                            | 536                                    | 4 161                           |
| IO-BAS       | Bulgarian National Oceanographic Data Centre(BGODC)                        | Bulgaria           | 4 616            | 1 137                          | 273                                    | 2 308                           |
| NIMRD        | National Institute for Marine Research and Development Grigore Antipa      | Romania            | 8 264            | 1 374                          | 602                                    | 4 010                           |

|                  |  |                    |                  |                |               |                  |
|------------------|--|--------------------|------------------|----------------|---------------|------------------|
| <b>RBINS</b>     | Royal Belgian Institute of Natural Sciences  | Belgium            | 13 749           | <b>1 420</b>   | 0             | 2 216            |
| <b>IOLR</b>      | Israel Oceanographic and Limnological Research (IOLR)                                | Israel             | 7 665            | <b>1 933</b>   | 333           | 2 592            |
| <b>MRI</b>       | Marine Research Institute (MRI)  | Iceland            | 8 182            | <b>2 268</b>   | 0             | 4 358            |
| <b>METU-IMS</b>  | Institute of Marine Sciences, Middle East Technical University                       | Turkey             | 30 478           | <b>2 461</b>   | 2 222         | 27 396           |
| <b>HCMR</b>      | Hellenic Centre for Marine Research  | Greece             | 19 535           | <b>3 546</b>   | 260           | 7 511            |
| <b>SHOM</b>      | Shom   | France             | 175 959          | <b>4 625</b>   | 3 754         | 169 536          |
| <b>SMHI</b>      | Swedish Meteorological and Hydrological Institute                                    | Sweden             | 99 686           | <b>5 400</b>   | 0             | -9 841           |
| <b>RIHMI-WDC</b> | All-Russia Research Institute of Hydrometeorological Information - World Data Centre | Russian Federation | 137 520          | <b>6 188</b>   | 12 003        | 80 395           |
| <b>SYKE</b>      | Finnish Environment Institute  | Finland            | 14 561           | <b>8 354</b>   | 5 162         | 14 561           |
| <b>MI</b>        | Marine Institute   | Ireland            | 18 350           | <b>10 101</b>  | 0             | 13 649           |
| <b>IEO</b>       | IEO/Spanish Oceanographic Institute  | Spain              | 50 888           | <b>10 532</b>  | 4 265         | 19 473           |
| <b>UKRI-BODC</b> | British Oceanographic Data Centre  | United Kingdom     | 124 244          | <b>14 241</b>  | 2 973         | 76 187           |
| <b>IMR</b>       | Institute of Marine Research - Norwegian Marine Data Centre (NMD)                    | Norway             | 128 610          | <b>16 973</b>  | 3 808         | 113 817          |
| <b>AU-DMU</b>    | Aarhus University  | Denmark            | 242 162          | <b>18 207</b>  | 609           | 78 008           |
| <b>FMI</b>       | Finnish Meteorological Institute   | Finland            | 31 922           | <b>18 422</b>  | 0             | 29 711           |
| <b>OGS</b>       | OGS (Istituto Nazionale di Oceanografia e di Geofisica Sperimentale)                 | Italy              | 129 530          | <b>27 983</b>  | 1 922         | 39 932           |
| <b>ICES</b>      | International Council for the Exploration of the Sea (ICES)                          | Denmark            | 89 688           | <b>65 517</b>  | 369           | 89 688           |
| <b>IFREMER</b>   | IFREMER / IDM/SISMER   | France             | 472 855          | <b>162 098</b> | 24 240        | 266 656          |
|                  |  | <b>TOTAL</b>       | <b>1 953 550</b> | <b>390 318</b> | <b>70 280</b> | <b>1 085 376</b> |

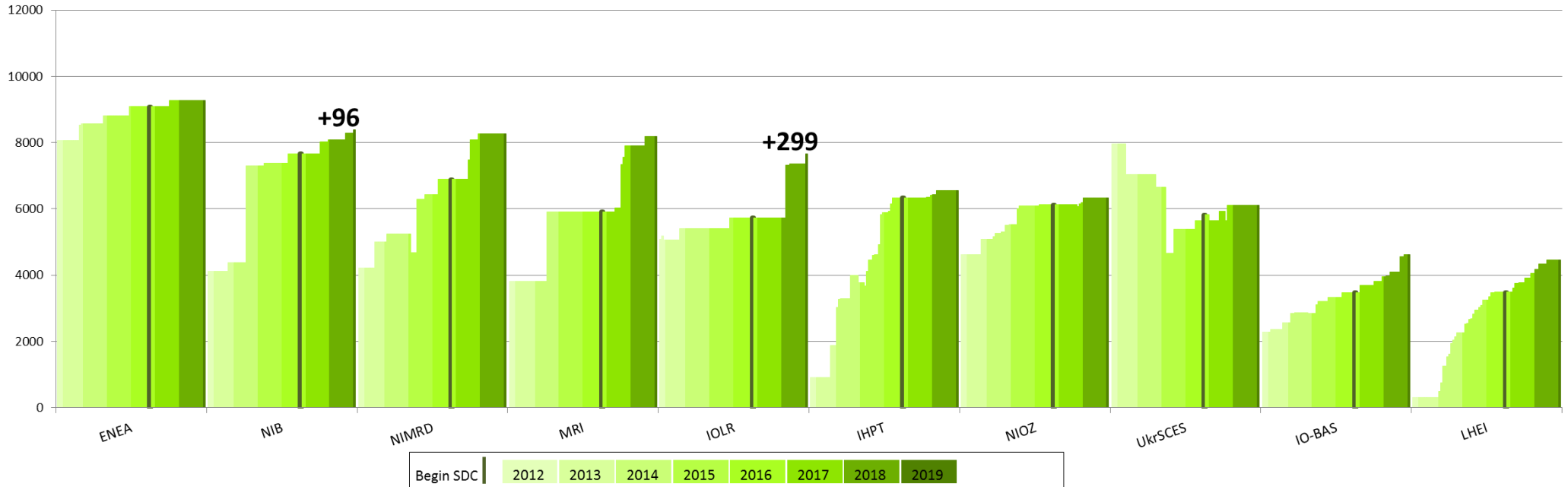


Partners with 10 000 < CDIs < 50 000



Begin SDC | 2012 | 2013 | 2014 | 2015 | 2016 | 2017 | 2018 | 2019

### Partners with 4 000 < CDI entries < 10 000





## Statistics on CSR harvesting

The CSR automatic harvesting result for this month is 18 new records and 1154 updates .

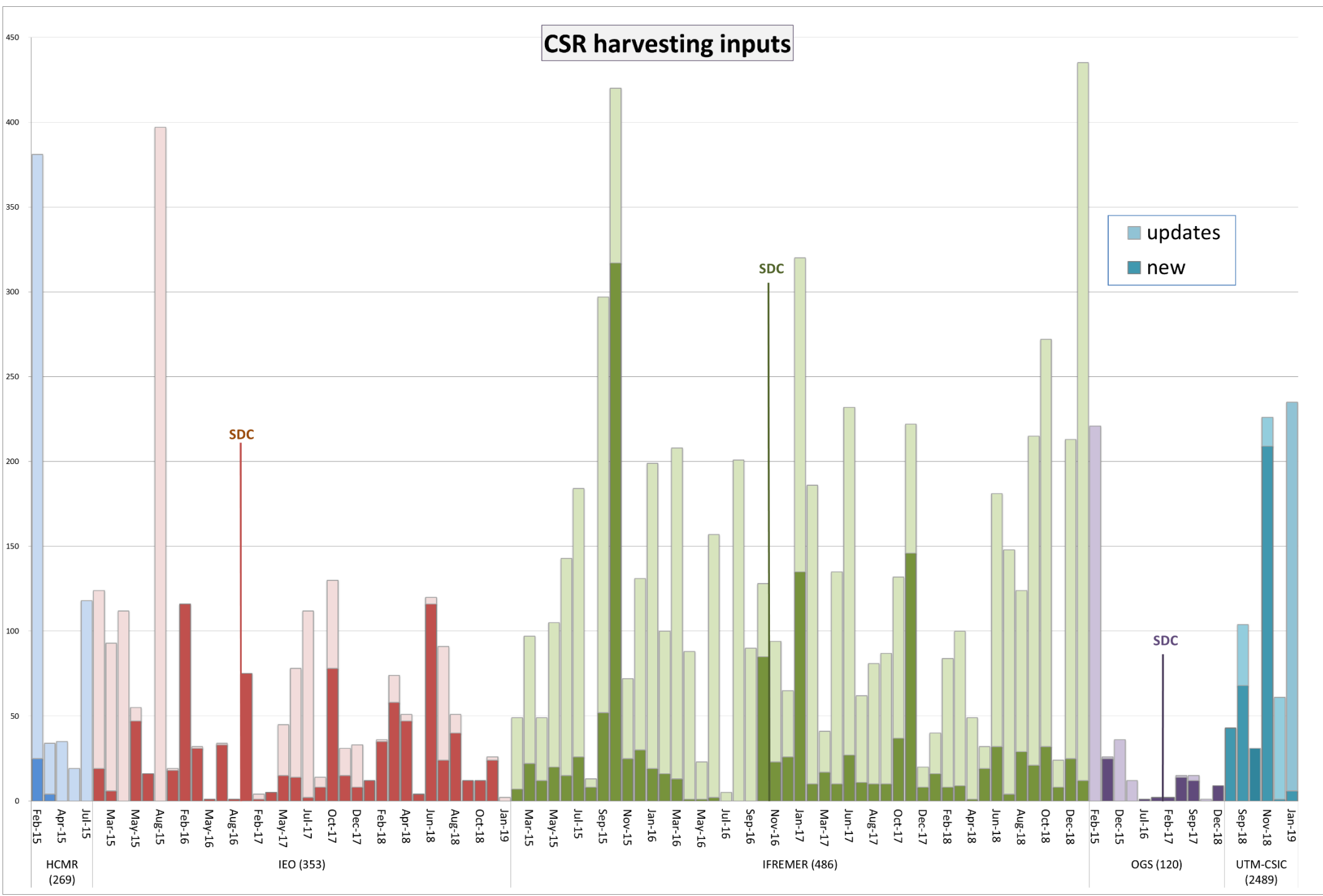
Details of harvesting per centre are the following:

| Centre          | Date       | New       | Update      |
|-----------------|------------|-----------|-------------|
| IFREMER (486)   | 15/01/2019 | 8         | 35          |
| UTM-CSIC (2489) | 15/01/2019 | 6         | 190         |
| IEO (353)       | 22/01/2019 |           | 2           |
| IFREMER (486)   | 22/01/2019 |           | 503         |
| UTM-CSIC (2489) | 22/01/2019 |           | 29          |
| IFREMER (486)   | 29/01/2019 | 4         | 385         |
| UTM-CSIC (2489) | 29/01/2019 |           | 10          |
| <b>Total</b>    |            | <b>18</b> | <b>1154</b> |

HCMR and OGS had no CSR creations or updates during this month.

The graph below shows the CSR harvesting inputs since beginning of 2015:

# CSR harvesting inputs





## History

### Global counts on all catalogues in 2018

| Catalogue | Jan-18    | Feb-18    | Mar-18    | Apr-18    | May-18    | Jun-18    | Jul-18    | Aug-18    | Sep-18    | Oct-18    | Nov-18    | Dec-18    |
|-----------|-----------|-----------|-----------|-----------|-----------|-----------|-----------|-----------|-----------|-----------|-----------|-----------|
| EDMO      | 3 927     | 3 931     | 3 940     | 3 952     | 3 968     | 3 981     | 3 997     | 3 999     | 4 010     | 4 021     | 4 068     | 4 078     |
| EDMED     | 4 154     | 4 158     | 4 162     | 4 166     | 4 166     | 4 170     | 4 173     | 4 189     | 4 191     | 4 182     | 4 187     | 4 187     |
| EDMERP    | 3 042     | 3 048     | 3 051     | 3 054     | 3 058     | 3 062     | 3 068     | 3 071     | 3 073     | 3 083     | 3 105     | 3 106     |
| EDIOS-PRG | 362       | 362       | 362       | 362       | 362       | 362       | 363       | 363       | 363       | 363       | 363       | 363       |
| CSR       | 55 399    | 55 485    | 55 630    | 55 709    | 55 783    | 55 937    | 55 982    | 56 085    | 56 316    | 56 436    | 56 694    | 56 783    |
| CDI       | 2 101 090 | 2 106 680 | 2 110 688 | 2 122 824 | 2 137 067 | 2 146 266 | 2 148 856 | 2 152 074 | 2 159 216 | 2 262 108 | 2 276 264 | 2 283 986 |

### Global counts on all catalogues in 2017

| Catalogue | Jan-17    | Feb-17    | Mar-17    | Apr-17    | May-17    | Jun-17    | Jul-17    | Aug-17    | Sep-17    | Oct-17    | Nov-17    | Dec-17    |
|-----------|-----------|-----------|-----------|-----------|-----------|-----------|-----------|-----------|-----------|-----------|-----------|-----------|
| EDMO      | 3 802     | 3 812     | 3 826     | 3 832     | 3 838     | 3 869     | 3 880     | 3 886     | 3 891     | 3 899     | 3 915     | 3 920     |
| EDMED     | 4 082     | 4 085     | 4 084     | 4 096     | 4 099     | 4 101     | 4 101     | 4 108     | 4 131     | 4 135     | 4 142     | 4 149     |
| EDMERP    | 2 981     | 2 988     | 2 990     | 2 990     | 2 992     | 2 993     | 3 000     | 3 016     | 3 018     | 3 020     | 3 026     | 3 036     |
| EDIOS-PRG | 362       | 362       | 362       | 362       | 362       | 362       | 362       | 362       | 362       | 362       | 362       | 362       |
| CSR       | 53 850    | 53 892    | 53 974    | 54 175    | 54 218    | 54 217    | 54 250    | 54 387    | 54 795    | 54 949    | 55 052    | 55 178    |
| CDI       | 1 947 452 | 1 949 991 | 1 955 483 | 1 968 060 | 1 971 285 | 1 974 509 | 1 977 738 | 1 980 818 | 2 000 402 | 2 063 832 | 2 081 618 | 2 093 605 |

### Global counts on all catalogues in 2016

| Catalogue | Jan-16 | Feb-16 | Mar-16 | Apr-16 | May-16 | Jun-16 | Jul-16 | Aug-16 | Sep-16 | Oct-16 | Nov-16 | Dec-16 |
|-----------|--------|--------|--------|--------|--------|--------|--------|--------|--------|--------|--------|--------|
| EDMO      | 3 671  | 3 670  | 3 686  | 3 691  | 3 695  | 3 712  | 3 730  | 3 733  | 3 747  | 3 758  | 3 775  | 3 791  |

|                  |           |           |           |           |           |           |           |           |           |           |           |           |
|------------------|-----------|-----------|-----------|-----------|-----------|-----------|-----------|-----------|-----------|-----------|-----------|-----------|
| <b>EDMED</b>     | 4 060     | 4 066     | 4 007     | 4 061     | 4 062     | 4 067     | 4 069     | 4 074     | 4 076     | 4 077     | 4 077     | 4 077     |
| <b>EDMERP</b>    | 2 903     | 2 961     | 2 961     | 2 961     | 2 966     | 2 971     | 2 971     | 2 974     | 2 975     | 2 975     | 2 975     | 2 979     |
| <b>EDIOS-PRG</b> | 362       | 362       | 362       | 362       | 362       | 362       | 362       | 362       | 362       | 362       | 362       | 362       |
| <b>CSR</b>       | 54 182    | 54 339    | 54 422    | 55 100    | 55 119    | 55 178    | 55 216    | 55 238    | 55 264    | 53 484    | 53 537    | 53 669    |
| <b>CDI</b>       | 1 813 947 | 1 819 492 | 1 824 402 | 1 825 957 | 1 844 660 | 1 854 787 | 1 858 162 | 1 864 378 | 1 869 790 | 1 873 823 | 1 884 034 | 1 936 759 |

## Global counts on all catalogues in 2015

| Catalogue | Jan-15    | Feb-15    | Mar-15    | Apr-15    | May-15    | Jun-15    | Jul-15    | Aug-15    | Sep-15    | Oct-15    | Nov-15    | Dec-15    |
|-----------|-----------|-----------|-----------|-----------|-----------|-----------|-----------|-----------|-----------|-----------|-----------|-----------|
| EDMO      | 3 210     | 3 223     | 3 275     | 3 324     | 3 422     | 3 532     | 3 556     | 3 564     | 3 583     | 3 619     | 3 639     | 3 659     |
| EDMED     | 3 980     | 3 982     | 3 984     | 3 984     | 3 990     | 3 992     | 4 014     | 4 034     | 4 053     | 4 055     | 4 054     | 4 060     |
| EDMERP    | 2 858     | 2 866     | 2 878     | 2 878     | 2 886     | 2 898     | 2 900     | 2 900     | 2 901     | 2 903     | 2 903     | 2 903     |
| EDIOS-PRG | 360       | 360       | 361       | 361       | 361       | 361       | 361       | 361       | 362       | 362       | 362       | 362       |
| CSR       | 52 977    | 53 028    | 53 238    | 53 304    | 53 400    | 53 463    | 53 553    | 53 602    | 53 836    | 53 938    | 54 057    | 54 135    |
| CDI       | 1 714 285 | 1 721 708 | 1 721 604 | 1 720 724 | 1 709 958 | 1 764 762 | 1 767 715 | 1 779 199 | 1 784 327 | 1 796 791 | 1 800 648 | 1 809 541 |

## Global counts on all catalogues in 2014

| Catalogue | Jan-14    | Feb-14    | Mar-14    | Apr-14    | May-14    | Jun-14    | Jul-14    | Aug-14    | Sep-14    | Oct-14    | Nov-14    | Dec-14    |
|-----------|-----------|-----------|-----------|-----------|-----------|-----------|-----------|-----------|-----------|-----------|-----------|-----------|
| EDMO      | 2 451     | 2 467     | 2 651     | 2 685     | 2 688     | 2 692     | 2 693     | 2 701     | 2 875     | 3 103     | 3 199     | 3 212     |
| EDMED     | 3 944     | 3 945     | 3 945     | 3 947     | 3 948     | 3 955     | 3 957     | 3 960     | 3 961     | 3 962     | 3 963     | 3 965     |
| EDMERP    | 2 787     | 2 808     | 2 830     | 2 832     | 2 834     | 2 837     | 2 841     | 2 844     | 2 847     | 2 849     | 2 850     | 2 857     |
| EDIOS-PRG | 359       | 360       | 360       | 360       | 360       | 360       | 360       | 360       | 360       | 360       | 360       | 360       |
| CSR       | 51 724    | 51 788    | 51 941    | 52 012    | 52 012    | 52 151    | 52 190    | 52 506    | 52 566    | 52 603    | 52 650    | 52 657    |
| CDI       | 1 498 793 | 1 537 556 | 1 558 428 | 1 566 528 | 1 569 847 | 1 575 035 | 1 604 916 | 1 612 514 | 1 621 749 | 1 626 904 | 1 631 984 | 1 662 548 |

## Global counts on all catalogues in 2012/2013

| Catalogue        | Sept-12   | Oct-12    | Nov-12    | Dec-12    | Jan-13    | Feb-13    | Mar-13    | Apr-13    | May-13    | Aug-13    | Sep-13    | Oct-13    | Nov-13    | Dec-13    |
|------------------|-----------|-----------|-----------|-----------|-----------|-----------|-----------|-----------|-----------|-----------|-----------|-----------|-----------|-----------|
| <b>EDMO</b>      | 2 261     | 2 283     | 2 296     | 2 304     | 2 330     | 2 351     | 2 359     | 2 362     | 2 370     | 2 384     | 2 404     | 2 404     | 2 423     | 2 431     |
| <b>EDMED</b>     | 3 834     | 3 834     | 3 834     | 3 834     | 3 834     | 3 834     | 3 882     | 3 885     | 3 885     | 3 889     | 3 901     | 3 901     | 3 925     | 3 944     |
| <b>EDMERP</b>    | 2 617     | 2 637     | 2 667     | 2 674     | 2 683     | 2 684     | 2 685     | 2 686     | 2 690     | 2 698     | 2 710     | 2 710     | 2 772     | 2 772     |
| <b>EDIOS-PRG</b> | 350       | 350       | 350       | 350       | 353       | 353       | 353       | 353       | 354       | 356       | 358       | 359       | 359       | 359       |
| <b>CSR</b>       | 48 824    | 48 975    | 49 326    | 49 750    | 50 917    | 51 033    | 51 276    | 51 647    | 50 973    | 51 181    | 51 207    | 51 259    | 51 588    | 51 730    |
| <b>CDI</b>       | 1 088 322 | 1 097 399 | 1 241 010 | 1 267 669 | 1 274 982 | 1 291 491 | 1 302 629 | 1 311 827 | 1 317 191 | 1 350 455 | 1 356 245 | 1 360 236 | 1 386 446 | 1 496 950 |