



*S. Simoncelli
M. Tonani
A. Grandi
INGV Bologna*

*PAN-EUROPEAN INFRASTRUCTURE
FOR OCEAN & MARINE DATA
MANAGEMENT*



SeaDataNet

Product Definition and Processing: Data Flow and Procedures

Deliverable D10.1 (due **Sept 30, 2012**)

- Define relevant parameters
- Use data access services
- Check their database content per sea region (time, spatial coverage, quality)
- Monitor the percentage of unrestricted data
- Define the methodology to create aggregated data sets
- Propose a set of generic data products as climatologies
- Report gaps to NODCs

CDI Content and Statistics per Sea Region

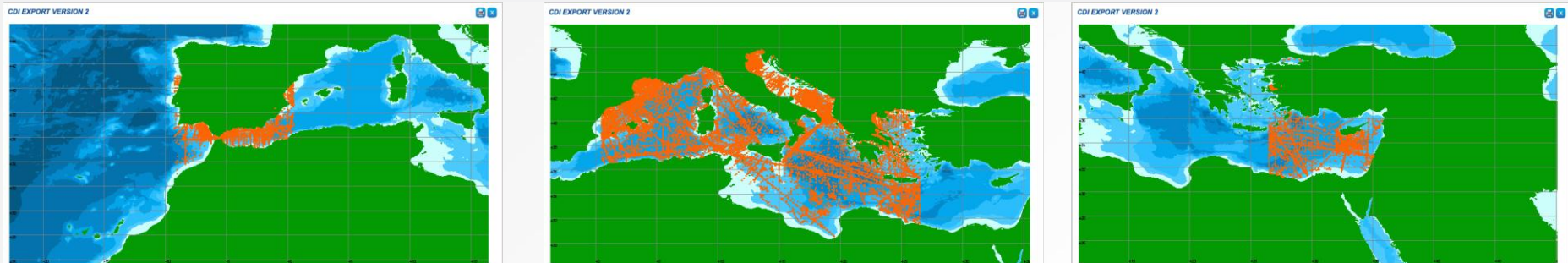
- Time period 1990-2012
- Temperature and salinity
- All instruments
- Data Policy statistics

→ Some issues to be clarified

SELECTION CRITERIA

Search
Search
Clear
?

Free search	<input type="text"/>	Date (yyyymmdd) from	1990010 to 2012091
Variable groupings	<ul style="list-style-type: none"> > Acoustics > Optical properties > Other physical oceanographic measurements > Water column temperature and salinity 	Instrument type	<ul style="list-style-type: none"> All >2000 Hz top-bandwidth single-channel seismic >2000 Hz top-bandwidth sub-bottom penetrator 1000 Hz top-bandwidth multi-channel seismic r
Sampling interval	All	Measuring area type	point
Cruise/Station name	<input type="text"/>	Platform type	<ul style="list-style-type: none"> All aeroplane beach/intertidal zone structure coastal structure
Projectname	<input type="text"/>	Instrument depth (m) from	<input type="text"/> to <input type="text"/>
Datasetname	<input type="text"/>	Originator	All
Waterdepth (m) from	<input type="text"/> to <input type="text"/>	CDI partner	All
Country	All		

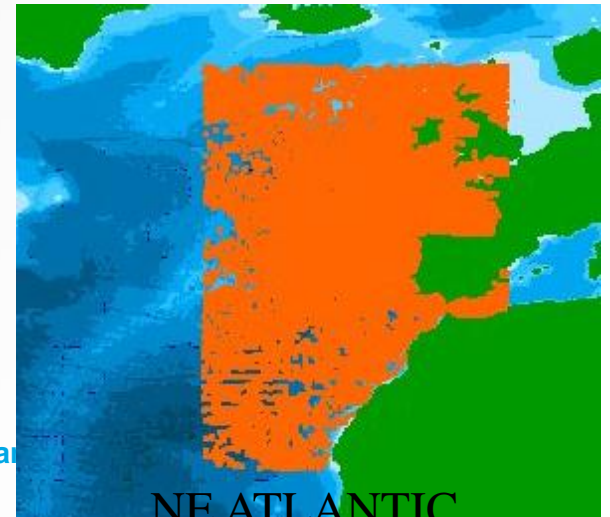
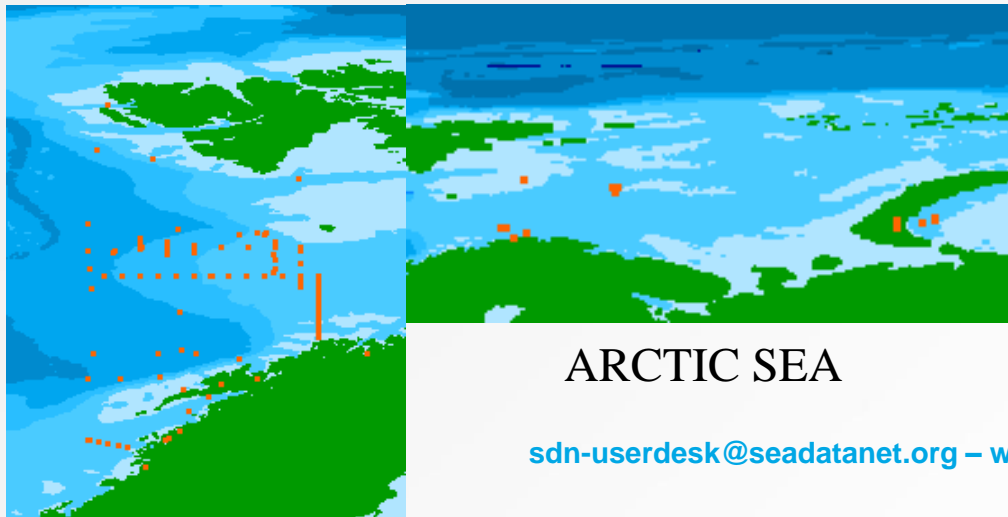
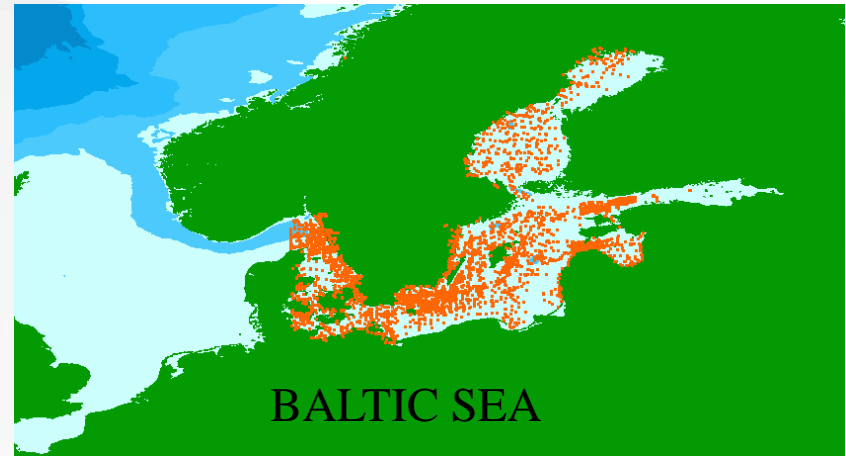
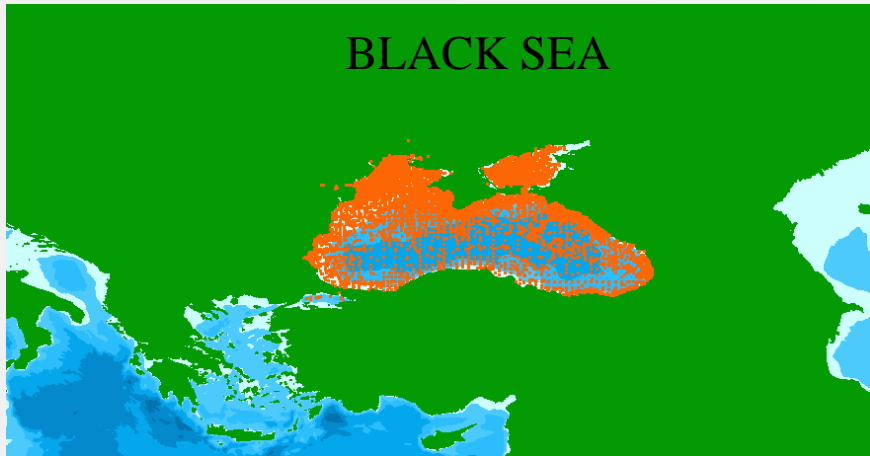


Because of bounding boxes selection criteria the Mediterranean Sea was divided into three regions in order to avoid data in the Atlantic and in the Black Sea



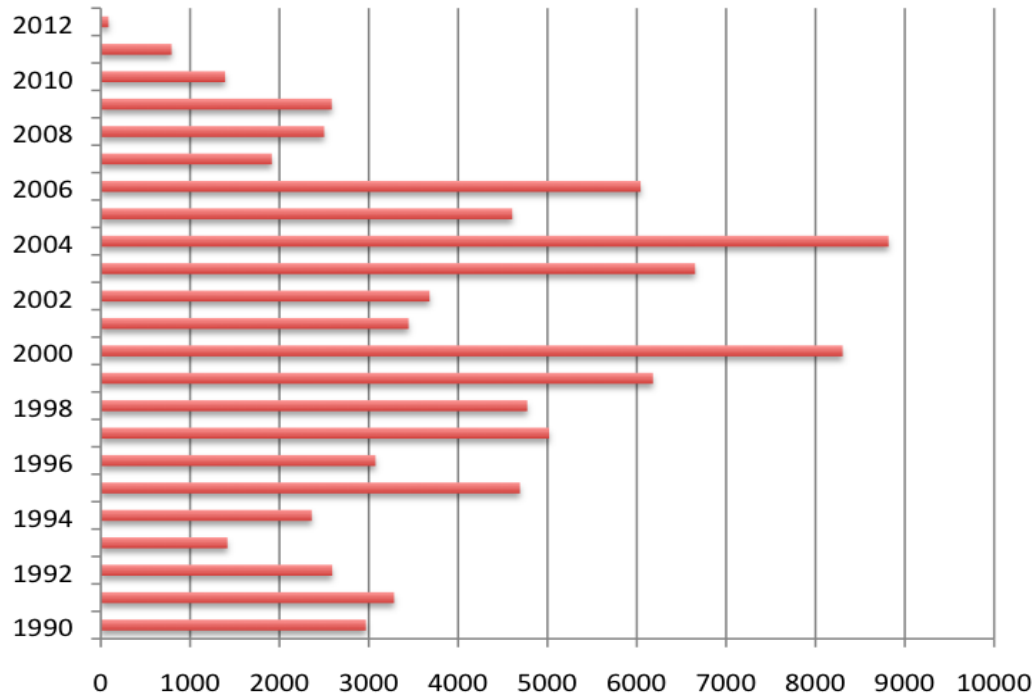
SeaDataNet

DATA DISTRIBUTIONS FOR T & S (1990-2012)



Mediterranean Sea

"N. DATI 1990-2012 Med Sea"



TEMPERATURE	SALINITY
83285	67529

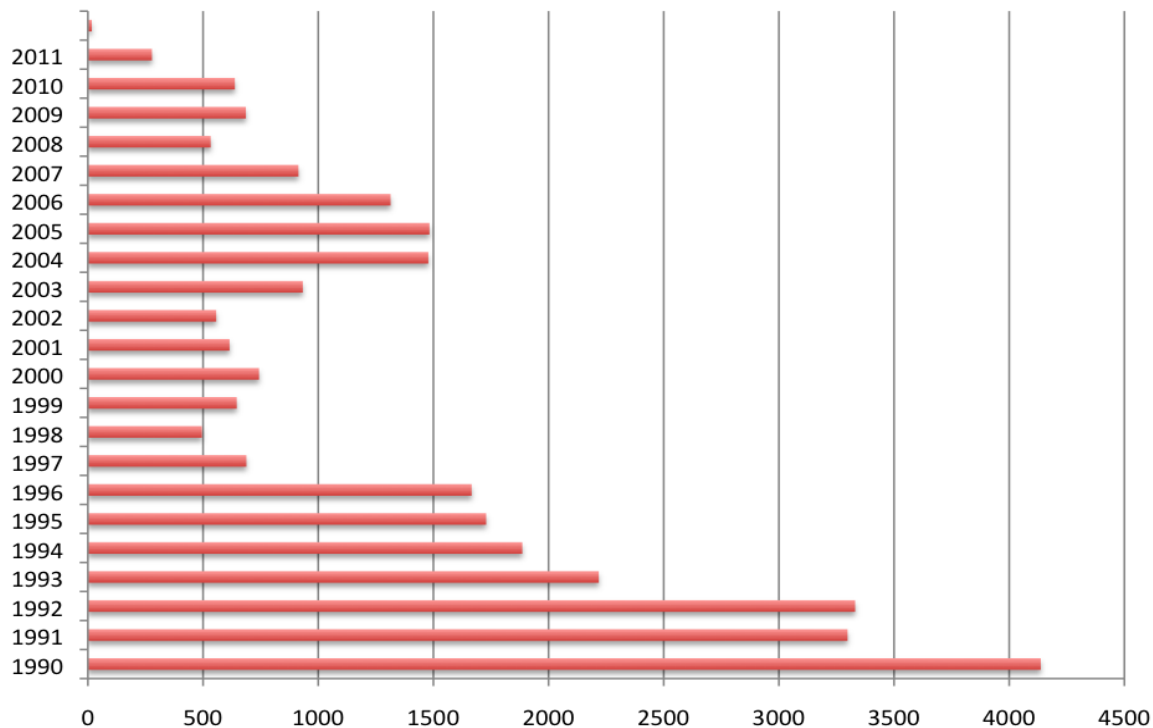
INSTRUMENT TYPE	N DATA
CTD	24419
Bathythermographs	9166
Discrete Water Samplers	8211
Salinity Sensor	6139
Current Meters	1172
Water Temperature Sensor	732
Thermistor Chains	974
Current Profiler	353

DATA ACCESS	N DATA	
Unrestricted	37045	43
By Negotiation	32241	38
SeaDataNet Licence	16343	19
No Access	66	0
Academic	27	0
Commercial Charge	36	0

Total number: 85758

Black Sea

N DATA 1990-2012 Black Sea



Total number: 30193

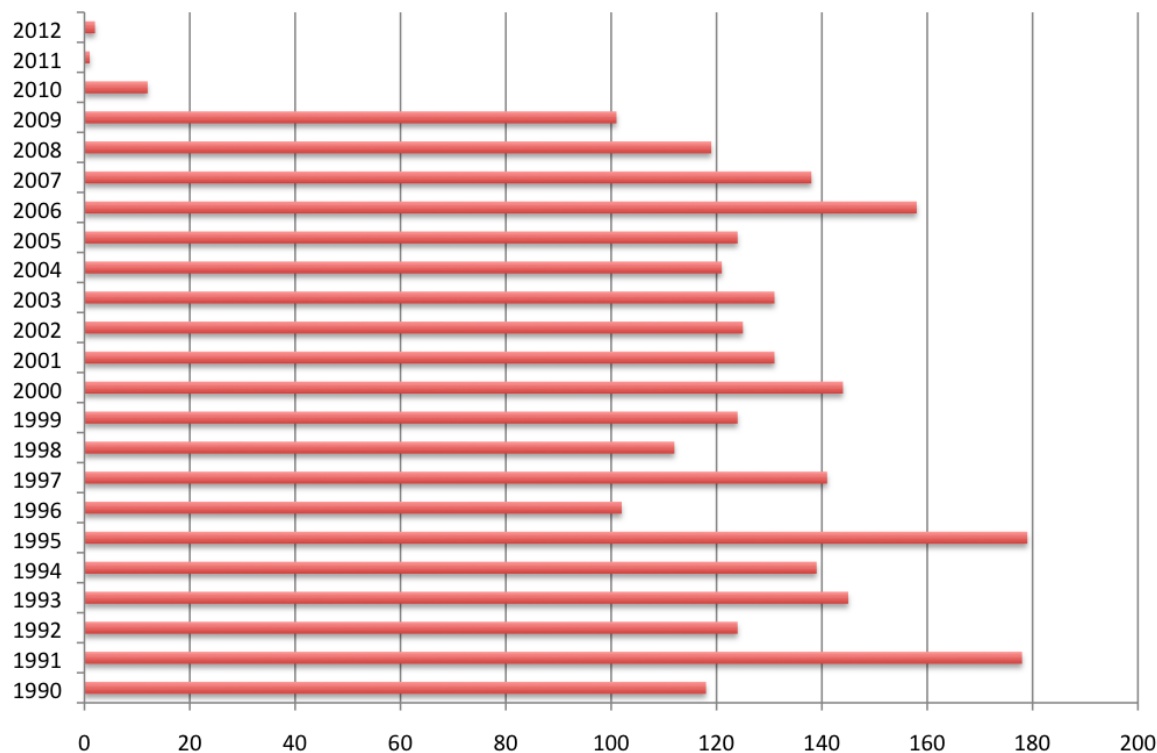
TEMPERATURE	SALINITY
23859	23433

INSTRUMENT TYPE	N DATA
CTD	12069
Bathythermographs	67
Discrete Water Samplers	11422
Salinity Sensor	491
Transmissometers	713
Water Temperature Sensor	902

DATA ACCESS	N DATA	%
Unrestricted	3976	13
By Negotiation	5018	17
SeaDataNetLicence	20181	67
Academic	1018	3

Arctic Sea

N. DATA 1990-2012 Arctic Sea



TEMPERATURE	SALINITY
2745	2730

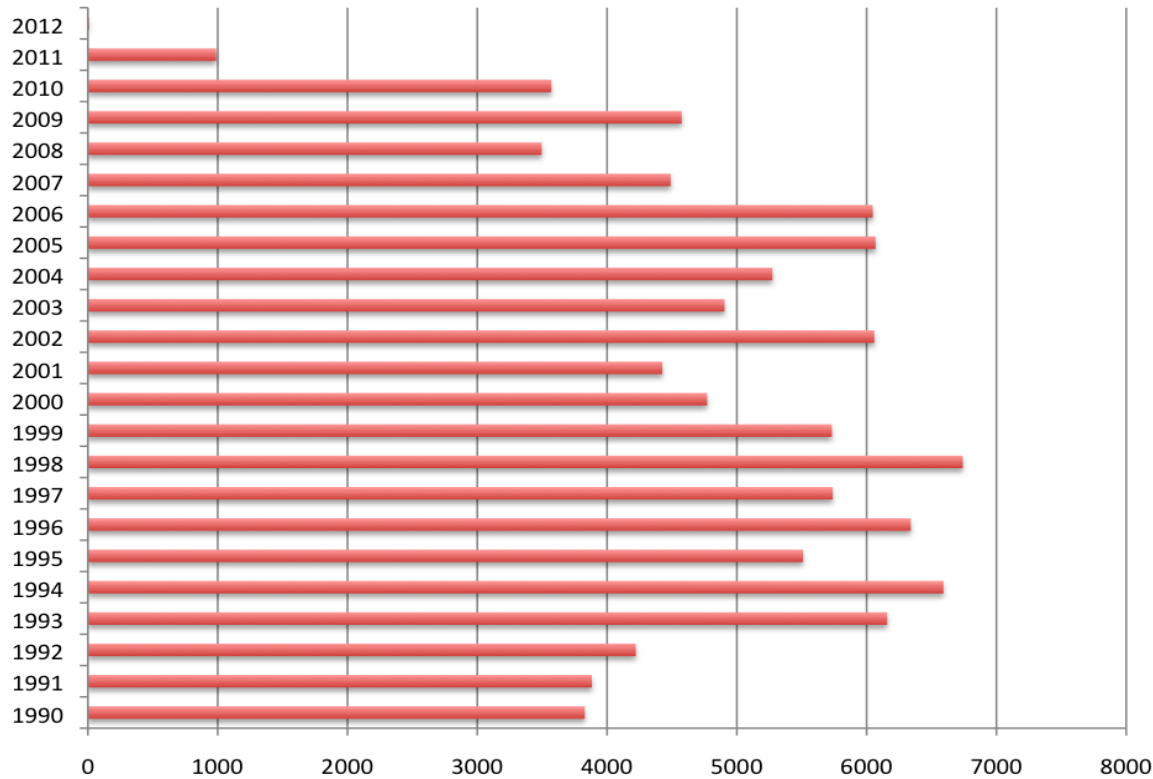
INSTRUMENT TYPE	N DATA
CTD	2399
Thermosalinographs	8
Discrete Water Samplers	340
Salinity Sensor	2

DATA ACCESS	N DATA	%
Unrestricted	2583	94
SeaDataNet Licence	80	3
Academic	87	3

Total number: 2750 !!!!very few data!!!!

Baltic Sea

N. DATA 1990-2012 Baltic Sea



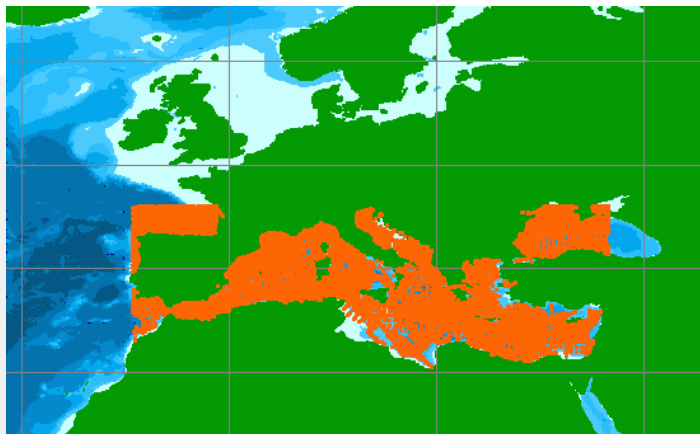
Total number 109426

TEMPERATURE	SALINITY
107673	106957

INSTRUMENT TYPE	N DATA
CTD	73040
Continuous Water Samplers	80
Water Temperature Sensor	26
Discrete Water Samplers	38024

DATA ACCESS	N DATA	%
Unrestricted	55654	51
SeaDataNet Licence	53524	49
By Negotiation	185	0
Licence	63	0

TO BE CLARIFIED



•REGION SELECTION

USING THE TOOL “SELECT BY BOX” FOR THE MED (-9.25°W-36.5°E 30°N-46°N), SOME DATA IN THE ATLANTIC OCEAN AND IN THE BLACK SEA ARE INCLUDED. IN THIS CASE THE NUMBER OF DATA TO ORDER IS **121476** INSTEAD OF **85758**



•DATA OUTSIDE THE SELECTED TIME INTERVAL

1993	1191
1992	1936
1991	2202
1990	2402
1989	4
1988	1
1987	1

•IN THE STATISTICS THE SUM OF ANNUAL DATA IS NOT EQUAL TO THE NUMBER OF THE SELECTED DATA (**87179** INSTEAD OF **85758**)

THE VARIOUS SUB-BASINS SHOULD BE DIVIDED INTO THE FOLLOWING BOXES

REGIONS	CDI BOXES
Arctic	2
Atlantic	6
Baltic	2
Black Sea	1
Global	1
Mediterranean Sea	3
NE Atlantic	1
North Sea	4



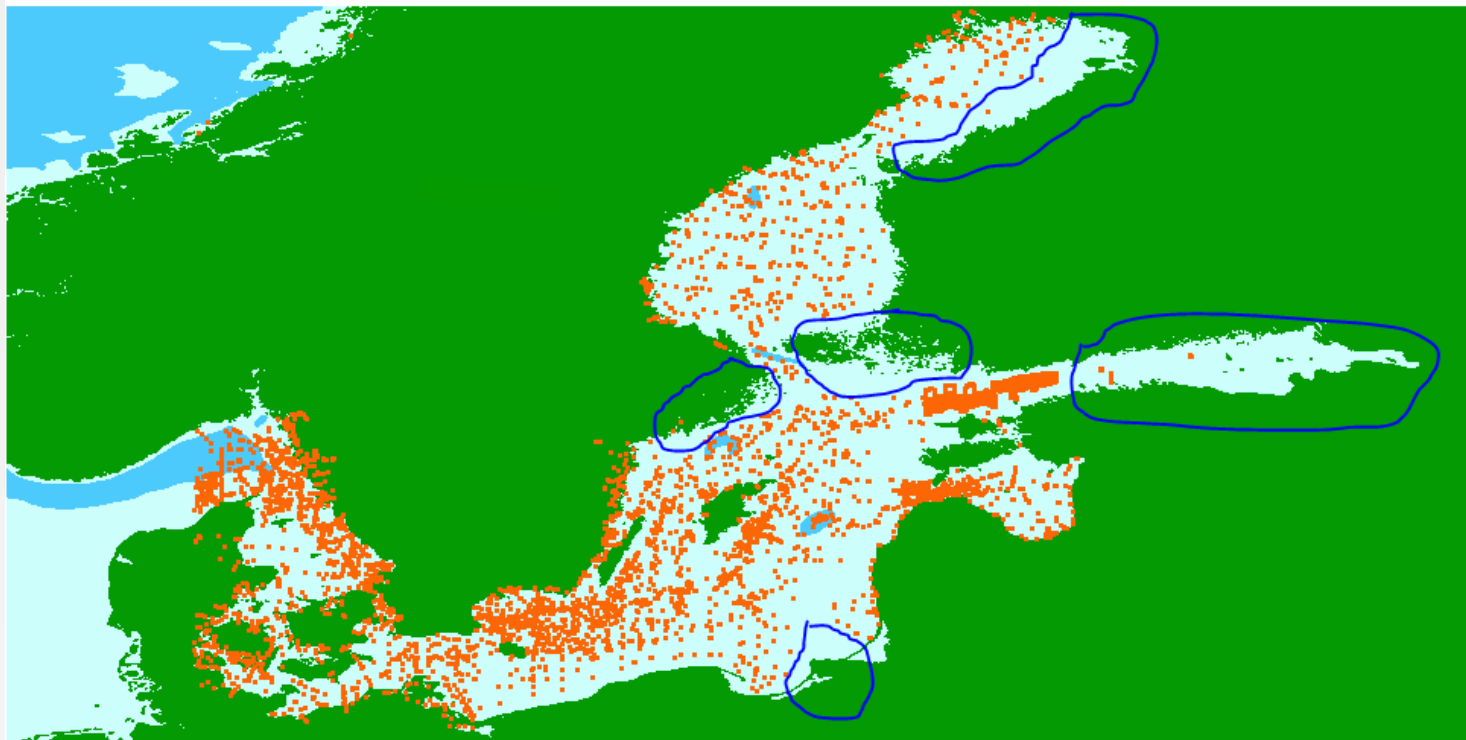
SeaDataNet

2012	2
2011	405
2010	2311
2009	3112
2008	2481
2007	3613

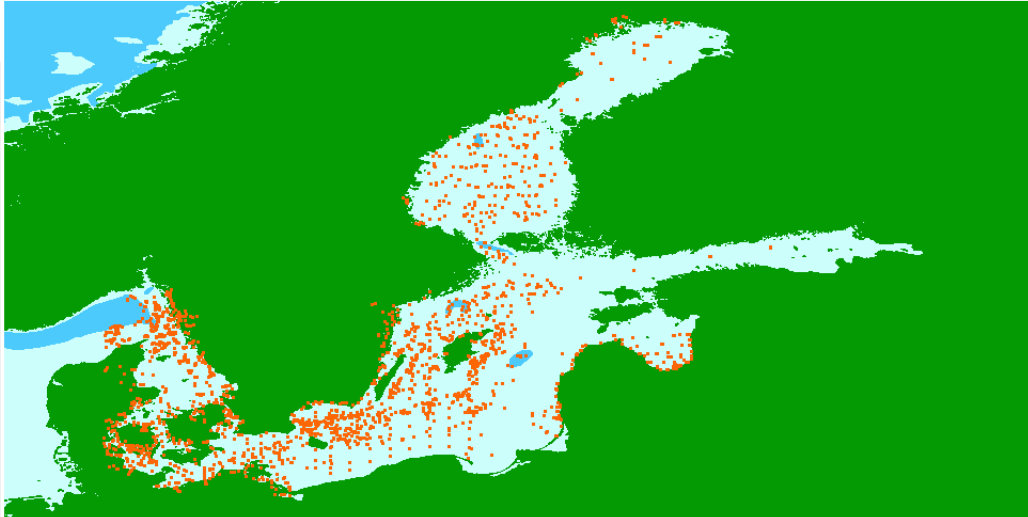
GDPEXPORT VERSION 2

Some time lag from
measurements until available at
the portal.

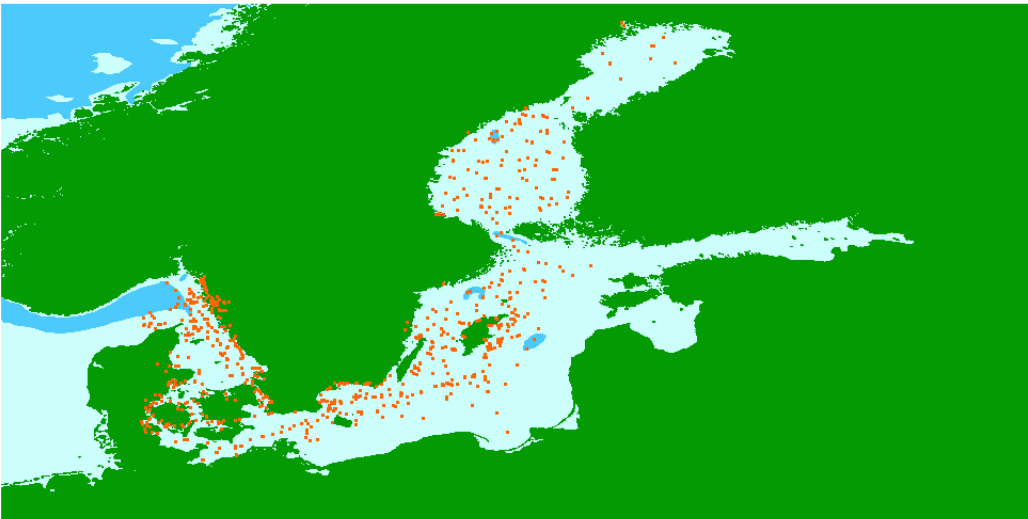
Data gaps, mostly near coast.



CDI EXPORT VERSION 2



CDI EXPORT VERSION 2



Gaps increase when looking at a shorter time span and more recent data

2005-01-01 –
today

2010-01-01 –
today

Conclusions

- Region selection
- Some statistics from CDI are not corrects
- Data coverage is not homogeneous in space and time
- There are still a large percentage of restricted data in the Mediterranean (38%) and Black Sea (17%)
- **User interface developments** will improve the data download procedure (number of requests, new query processor)
- **New release of ODV** will enhance our QC and aggregating capabilities